

1	General .....	3
2	Conditions of entry .....	4
3	Gender Policy.....	7
4	Scoring .....	7
5	Draw Formats and Sizes .....	7
6	Break Between Matches.....	9
7	Seeding .....	9
8	Withdrawals.....	11
9	Late Arrival.....	12
10	Tournament Organisers .....	13
11	Roles and Responsibilities.....	13
12	Competition Entries .....	14
13	Tournament Software.....	14
14	Disputes .....	14
15	Competition Formats .....	15
15.1	Copper Competitions.....	15
15.2	Entry Process: .....	15
15.3	Tournament Software: .....	15
15.4	Draw Format:.....	15
15.5	Officiating: .....	15
15.6	Entry fee: .....	15
16	Bronze Competitions .....	16
16.1	Entry Process: .....	16
16.2	Tournament Software: .....	16
16.3	Draw Format:.....	16
16.4	Officiating: .....	16
16.5	Entry Fee:.....	16
17	Silver Competitions.....	18
17.1	Entry Process: .....	18
17.2	Tournament Software: .....	18
17.3	Draw Format:.....	18
17.4	Officiating: .....	18

# REGULATIONS FOR SANCTIONED COMPETITIONS



17.5	Entry Fee:.....	18
18	Gold Competitions .....	19
18.1	Entry Process: .....	19
18.2	Tournament Software: .....	19
18.3	Draw Format:.....	19
18.4	Officiating: .....	19
18.5	Entry Fee:.....	19
19	Platinum Competitions .....	20
19.1	Entry Process: .....	20
19.2	BJC Eligibility: .....	20
19.3	EJC Eligibility: .....	21
19.4	Eligibility Appeals Procedures .....	21
19.5	Tournament Software: .....	22
19.6	Draw Format:.....	22
19.7	Officiating: .....	22
19.8	Entry fee: .....	22
20	COVID Policies .....	22
<b>Appendix A: Sanctioned Events Regulations 2023/24 .....</b>		<b>23</b>
<b>Appendix B: Sanctioned Events Withdrawal Rules/Flow .....</b>		<b>31</b>

*These rules and regulations are written and updated by England Squash for the purposes of junior sanctioned competitions. England Squash reserves the right to update these rules and regulations at any time and without notification to ensure the spirit of competition and to safeguard all parties involved.*

All Sanctioned Competitions must meet the following criteria.

## 1 General

### • Venues

All matches must be played on courts affiliated to England Squash and organised by an affiliated club.

### • Rules

Matches shall be played under the Rules of the Game unless approved or directed by England Squash.

Rules can be found at: [www.worldsquash.org](http://www.worldsquash.org)

### • Code of Conduct

All players, coaches, parents, tournament organisers and attendee must follow the England Squash Code of Conduct for Players. For more information and printable versions of each document, please [click here](#).

### • Eyewear

[WSF certified](#) or British Standard BS7930.1 protective eyewear is mandatory for participation in all sanctioned England Squash competitions. Eyewear must be always worn by all junior players while on court. This includes appropriate prescriptive protective eyewear or iMask in front of spectacles.

### • Clothing

All players must wear clothing suitable for squash including non-marking soles. Please refer to the specific venue policy for further information.

Players competing in matches at Platinum, Gold and Silver competitions, or where steaming is taking place must not wear the same-coloured top as their opponent. All players are required to bring a minimum of two different coloured tops to all matches they are scheduled to play in. In the competition that two players are wearing the same-coloured top for a match, the lower seeded player must change into their second top to prevent any clashes.

### • Safeguarding including photography and video recording policy

1. The England Squash safeguarding policy including details on photography and video recording is available by [clicking here](#).
2. It is mandatory for all venues hosting an England Squash sanctioned event to have a valid England Squash Membership/Affiliation at the time of the event and a registered Safeguarding/Welfare lead.
3. The venue Safeguarding/Welfare lead must have a valid safeguarding qualification and valid DBS registered with England Squash.

4. It is mandatory for tournament organisers to have a valid England Squash membership, a valid DBS check and safeguarding qualification registered with England Squash before hosting and for the duration a competition.
5. A safeguarding lead must be present at the venue for the full duration of the competition.
6. A qualified first aider must be present at the venue for the full duration of the competition.

- **Balls**

The use of the England Squash Official Ball must be used for all matches. A double dot competition ball must be used at all competition levels from Bronze to Platinum. A single dot ball may be used at Copper level for the age categories Mixed U9 and Girls and Boys U11 and at all levels for Mixed U9 however, it will be at the tournament organisers discretion as to which ball type will be used.

- **Competition Entry**

All entries for all levels of competition will be **ONLINE ENTRY ONLY** through the England Squash website.

All entrants must have an England Squash account with a linked Sport Manager account, the exception applied to Copper competitions.

- **Tournament Organiser**

1. A Tournament Organiser/Director must be appointed to whom all disputes relating to entries, scheduling and refereeing aspects shall be referred.
2. Changes to dates of a competition can only be made with permission of England Squash. All requests must be put in writing on email and communicated with England Squash clearly explaining the legitimate reason.

- **Competition Applications**

England Squash will monitor the demand and applications of competitions. Allocation will be made to host as many competitions as possible on each date. Where competitions are closer than 75 miles or 1.5 hours, whichever is greater between one another, initially the date will be given to the first applicant with the second or more being provided further options of dates. If none of the dates suit, a further look into the feasibility to host both competitions will be done involving both tournament organisers. We wish to facilitate as many competitions as possible on each date and therefore will aim to deliver competitions closer than 75 miles if it is perceived possible by both organisers.

## 2 Conditions of entry

- **Online Entry**

1. Entries must be made online via the England Squash website through the tournament software Sport Manager and must be received with payment on entry. .
2. Entrants must be an England Squash member on the last day of the competition, except for Copper events.
3. Entrants must be under the maximum age as of the last day of the competition to be eligible to compete in the respective age category.

4. Age categories are as follows: Mixed U9s and Boys and Girls U11s, U13s, U15s, U17s and U19s.
5. Whilst every effort will be made to check all entries, it is ultimately the responsibility of the participant to ensure that their entry complies with the entry policies. This includes correct England Squash membership details (date of birth and gender) and entry into the correct age category and/or competition. It is at the discretion of England Squash as to whether entries made in error will be accepted.
6. By entering a competition, entrants are agreeing to abide by all terms and conditions of entry including those outlined by tournament organisers in relation to COVID-19. Failure to comply with the guidance may result in your entry being withdrawn or ranking points being withheld.
7. Players may only enter 1 age category per competition.

- **Waitlists**

Due to the high demand for positions in Silver, Gold, and Platinum competitions, draw sizes may be capped. Any additional entries outside of the draw size will be placed on a reserve list pending withdrawal. England Squash will not be held liable for any expenses incurred by those placed on waitlists. We advise that all players when making bookings for tournaments should use services with a full comprehensive refund policy.

The waitlist will be issued with the seeding for each draw. Once on the waitlist and seedings are issued players are not permitted to move to another age category, if applicable. Players may only move age categories if advised in advance of the seedings and waitlists being issued.

The waitlist will be issued in the order of player ranking. If a player does not have a ranking the order of the waitlist will be based on the earliest entry (first come first serve basis).

- **Withdrawals and Refunds**

1. Withdrawals pre-competition must be via Sport Manager. Refunds will only be given to withdrawals made before the closing date. See the England Squash [help guides](#) for full details and instructions.
2. Withdrawals from any competition after the closing date (including withdrawals from the plate) must be notified to the tournament organiser as soon as possible pre-competition or on the day with a valid reason. There will be no refund when withdrawing after the closing date. Refunds will only be provided if a player does not make a draw, or a grade is cancelled. All other exceptions are at the discretion Tournament Organiser or England Squash. Any reason for withdrawal must then be confirmed in email to England Squash and the tournament organisers within 7 days of the competition, and in the case of withdrawal during a competition due to illness or injury this must be accompanied by a letter of explanation and a medical certificate where appropriate.
3. Players who have a prescribed illness or injury or have not yet recovered are advised not to play in a competition. If a withdrawal is because of this prescribed illness or injury, then no ranking points will be awarded to the player.

4. No player shall enter or be entered into two or more competitions if the published dates of the competitions overlap unless otherwise agreed with the tournament organiser and England Squash. Any player deemed to have entered two or more competitions for the purpose of withdrawing from one after the closing date (withdrawing from a Bronze after getting into a Silver) will not receive a refund of their entry fee.
  5. Upon entering a competition, participants are expected to play in all scheduled games to which they are involved and must be prepared to play at the times stated for each competition. No games shall be conceded before the competition unless agreed to by the tournament organiser and/or England Squash. England Squash will only take into consideration requests made for Bronze and Copper competitions. Requests made for Silver/Gold/Platinum competitions will not be accepted under any circumstance pre-competition.
  6. In the case of emergencies or delays on the day of the competition, participants must contact the tournament organiser to inform them. It will be at the tournament organisers discretion as to whether they are allowed to continue in the competition.
  7. Any persons requesting a refund for a tournament entry fee, needs to have made an application by email to the tournament organiser and England Squash. Both parties reserve the right to Approve or Deny the request.
  8. In case of dispute over the validity of the reason of withdrawal tournament organiser must notify England Squash within 7 days. England Squash will then have the power to check up on rational and have the final decision on the points allocation. Any appeals can be put through the appeals process highlighted later on.
  9. Appendix B in this document provides withdrawal rules and flow.
- **Player Referee Marking**
    1. During all junior competitions, junior players are required to mark matches. Both players from the match are expected to referee/mark together and must be ready and present immediately following the completion of their match. By entering a competition, the participating player is agreeing to be bound by such terms unless special dispensation is requested in writing to [competitions.support@englandsquash.com](mailto:competitions.support@englandsquash.com) and to the tournament organiser. A player not fulfilling their refereeing responsibilities or who abandons their refereeing responsibilities will be marked as a default with zero points being awarded for their participation in the competitions and against their ranking.
  - **Cancellation / Additional Expenses**

England Squash and/or the tournament organiser will not be liable for any expenses incurred because of a competition being cancelled or postponed. All expenses are at the sole risk of the entrant. We advise all entrants to search for accommodation and travel with a comprehensive refund policy.

- **Code of Conduct**

By entering a competition, the participating player, parent or guardian is agreeing to be bound by the [England Squash Code of Conduct](#).

### 3 Gender Policy

- At both Bronze and Copper sanctioned competitions on the junior circuit, requests may be made to for girls to play in a boys category as these are deemed participation level competitions. Any requests must be sent directly to England Squash by email to [competitions.support@englandsquash.com](mailto:competitions.support@englandsquash.com) and must be supported by justifiable reasoning. All requests will be considered by the Performance Team. Boys are not permitted to play in girls categories. Girls playing in a boys event will not receive any ranking points.

### 4 Scoring

1. All events and age categories will be played point a rally (PAR) scoring to 11. Should players reach 10-10 in any game a tie break will operate, the winner needing 2 clear points to win.
2. Should a round robin format be played and the number of matches is equal between any players, the winner will be decided on games won. Should the number of games be equal then it is then decided on points difference.

### 5 Draw Formats and Sizes

- **Bronze and Copper Competitions**

1. Bronze and Copper competitions are local 'open' tournaments that attract both local players and nationally ranked juniors. Games will be played as best of five for 2 day events or best of three for 1 day events.
2. Bronze and Copper competitions will endeavour to accept all entries on a first come first serve basis, however if the tournament organiser is unable to schedule all matches, then draw sizes may be capped. Any additional entries will be added to a waitlist.
3. Draws will be a maximum of 16. Any larger draws must be agreed and authorised by England Squash.
4. A minimum of 3 scheduled matches will be provided for all players in an accredited tournament unless dispensation is agreed upon by England Squash. Where only 2 or less scheduled matches are guaranteed the tournament organiser will provide advanced notice with the option to withdraw with a full refund. Players are expected to complete all scheduled matches. Late withdrawals, injuries, or other unexpected competitions may lead to some players receiving 2 or fewer matches.
5. Bronze and Copper competitions may run draws listed provided in the tournament software. Any draw types that fall outside of this must be pre-approved by England Squash before being used at a competition.
6. Categories may be merged when necessary to ensure a minimum of 3 matches is achievable. Where categories are merged the rankings allocation will work in the following way; Players will receive their ranking points at the category in which they entered providing 2 or more players have



entered in that category. Players will be listed in order of which they finished within their own category. For example, if 2 GU11 players are merged with 3 GU13 players, the GU11 players will receive ranking points with the finishing positions 1<sup>st</sup> and 2<sup>nd</sup> place, regardless of their finishing places in the merged category. The same will apply to the GU13 players.

7. For County Closed competitions, players can play in more than one age category. Players will receive ranking points for the age category originally entered, unless agreed otherwise with England Squash.

- **Silver, Gold and Platinum Competitions**

1. Silver, Gold and Platinum competitions are for the top ranked players in the country and will be open to the top 150 ranked players.
2. Players ranked below 150 may enter the event and be allocated a place if the draw is not filled or draw size allows.
3. A minimum of 3 scheduled matches will be provided for all players in an accredited tournament. Players are expected to complete all scheduled matches. Late withdrawals, injuries, or other unexpected competitions may lead to some players receiving 2 or fewer matches.
4. All Silver, Gold and Platinum competitions **must run as Full Monrad draws** with all players playing through all stages of the competition into final finishing positions as part of the Monrad. The only exception to this is division sizes of 6 players or less whereby round robin groups may be used. In exceptional circumstances England Squash may grant permission to allow an alternative draw size if it allows players to receive the appropriate number of matches.
5. Where a Monrad draw does not guarantee all participants a minimum of 3 games, draw sizes will be capped.
6. Whereby we receive an odd number of entries below 24 players in a division, the final draw size will be capped at the nearest even entry size. For example, if 13 players enter a division, the draw size will be capped at 12 with the additional player being placed on reserve in the competition of a withdrawal. The exception to this is draw sizes of 10 and 18, these will be capped at the nearest Monrad size of 8 and 16 with additional players placed on reserve in the competition of a withdrawal. Draw sizes of 15 will also be accepted as these guarantee all players 3 matches. Please see our Appendix for further details.

This policy is in place to resolve scheduling issues resulting from the structure of the draws and potential changes to draw formats in the competition of withdrawals. It is imperative that draws be consistent and transparent pre-competition.

7. Silver, Gold and Platinum competitions may use 64 draw sizes if possible. Tournament organisers must make a written request to England Squash to run a 64 draw size. A minimum of 40 players is required and all scheduling must align with England Squash rules and regulation regarding playing time.
8. All Silver, Gold and Platinum draws should be completed using the seedings provided by England Squash using the random draw method.



*Top seeded players should be placed at the top of the draw, and the second seed at the bottom, seeds 3 and 4 must be drawn randomly and placed in the 3/4 slots. The 5/8 seeds must then be drawn randomly and placed in the 5/8 seed positions. 9/12, 13/16 seed positions and so on will take the same format up to 32 players. Unseeded and above 32 players must be drawn randomly into the remaining slots.*

9. If a player withdraws from the competition after a draw has been made and before the start of the competition, replacements can be made from a reserve/waitlist compiled from those players who did not initially secure a place in the draw. Reserve players will be contacted in order of seeding position until the position is filled.
10. If there is no reserve/waitlist then the top seeded player will receive a bye and the player moved down to replace the withdrawal.
11. Re-draws for Silver, Gold and Platinum draws will only be made if a top 8 seed withdraws from the competition, or if the draw size changes due to withdrawals and impacts the number of matches a player has in the tournament. This is to ensure that players have at least 3 matches in the draw. No re-draws will take place after the start of the competition. It is the tournament organisers duty to make sure this is communicated affectively.
12. If byes are required in the draw, this must be given to the number 1 seed. If other byes are necessary, then those should be awarded to the next highest seed.

## **6 Break Between Matches**

1. The following times should be used as a guideline for Tournament Organisers when creating schedules. Tournament Organisers should consider the ability level of the players involved and the stages of the tournament when creating an affective schedule. For example, 2 hours minimum is required for a Silver competition however in the latter stages of the competition organisers may need to increase the time between matches to 2.5 or 3 hours to account for the length of the fixtures being played.
2. For Platinum and Gold competitions, players will have a minimum of 3 hours between scheduled match start times.
3. For Silver competitions, U13s, U15s, U17 and U19s players are recommended to have a minimum of 3 hours between scheduled match start times. U9s and U11s are recommended to have a minimum of 2 hours between scheduled match start times.

For Bronze and Copper competitions, players are recommended to have a minimum of 1 hour between scheduled match start times, or less on agreement of all parties and where practical.

## **7 Seeding**

### **• Bronze and Copper Competitions**

1. All Seeding for Bronze and Copper competitions should be managed by the tournament organiser using the England Squash Ranking system. Tournament organisers may request the input from England Squash.

2. The England Squash Ranking system should be the primary method of seeding. In exceptional circumstances a player may be moved to a top 8 position if suitable justification can be offered.

**Squash levels must not be used for seeding.**

3. The rankings for the month in which entry closes will be used to determine the seedings for the competition. IE if the closing date is 25<sup>th</sup> May then the current May rankings will be used.
4. All seeding related questions must be directed towards the tournament organiser.
5. The rankings for the month in which entry closes will be used to determine the seedings for the competition. IE if the closing date is 25<sup>th</sup> May then the current May rankings will be used. This applies even if the starts in the following month.

- **Silver, Gold and Platinum Competitions**

6. For Silver, Gold and Platinum events a seeding panel will manually seed the top 8 seeds per age group. This will be based on ranking, finishing positions in recent major events, recent results and head to heads. The remainder of the seedings will revert to the latest ES ranking at the time of entry closing.
7. **Squash levels will not be used for seeding.**
8. The seeding panel will be chaired by a Performance Coach, supported by other nominated coach(es) of suitable expertise and knowledge. This nominated coach(es) may change from event to event.
9. The seedings will be issued within 4 days of the closing date for review. The review period will be 48 hours after issuing. Any queries or questions raised after this time will not be considered.
10. All seeding related questions must be sent to [juniorcompetitions@englandsquash.com](mailto:juniorcompetitions@englandsquash.com).
11. When draws are created the 1 & 2 seeded players are placed at the top and bottom of the draw, the rest of the draw placed as follows:
  - i. 3-4 seeds are drawn and placed randomly
  - ii. 5-8 seeds are drawn and placed randomly
  - iii. 9-12 seeds are drawn and placed randomly
  - iv. 13-16 seeds are drawn and placed randomly
  - v. 17-20 seeds are drawn and placed randomly
  - vi. 21-24 seeds are drawn and placed randomly
  - vii. 25-28 seeds are drawn and placed randomly
  - viii. 29-32 seeds are drawn and placed randomly
  - ix. All other players above 32 are drawn and placed randomly

Randomly = randomly selected by the tournament software.

Once the draws are issued no further changes will be made to the seedings, except if there is a withdrawal.

12. International players will be seeded manually based on information from NGBs and other competition ranking information. International players should also provide a note on their entry and email [juniorcompetitions@englandsquash.com](mailto:juniorcompetitions@englandsquash.com) with any relevant statistics.

○ Injury:

- Players that are injured for a period of over 3 months are eligible to submit a seeding request
- This must be submitted prior to entry closing date by email to: [juniorcompetitions@englandsquash.com](mailto:juniorcompetitions@englandsquash.com).
- This must be complemented with medical information for the panel to consider. This must include details on the type of injury, medical advice on the time away from competition and return to competition, and previous significant results in Silver, Gold or Platinum events in the 6 months prior to injury,
- Seeding will be based on previous rankings and results in the 6 months prior to injury in comparison to the other players within each event,
- The seeding panel will determine the number of events this will be valid for based on the amount of time away from competition,
- The seeding panel may review the seeding position event by event on return to competition based on the form demonstrated in coming back into competition.

**Exceptional Circumstance**

- England Squash reserves the right to seed players differently to ranking in the case of exceptional circumstances and this will only apply when seeding top 8 players. Whether a player is eligible for this will be decided by the seeding panel.
- The seeding panel's decision is final.

● To submit a seeding

- All evidence must be submitted to the Seeding Panel ([juniorcompetitions@englandsquash.com](mailto:juniorcompetitions@englandsquash.com)) before the competition closing date to be considered. Any evidence provided outside of the portal will not be accounted for.
- England Squash will not take any requests over the phone relating to seedings. You will be directed immediately to the Seeding Panel.

## 8 Withdrawals

1. For all junior competitions, a player may withdraw without penalty, pertaining to section 8.2 below, before 12:00pm on the Monday prior to the start of the tournament. Any withdrawal after this deadline and before the start of a player's first match is considered a late withdrawal. Any player who is registered for a competition and does not show up to play is also considered a late

withdrawal. All withdrawals and any refunds are subject to the conditions in section 2: Conditions of Entry.

2. Penalties for late withdrawals are as follows:

- 1st late withdrawal within a 12-month period: No penalty, but the late withdrawal will be noted on the player's record.
- 2nd withdrawal within an 11-month period: The player receives a rankings penalty. The penalty is a zero-point tournament being added to the player's record. The zero-point tournament counts as a tournament exposure and will be treated like any other tournament with regards to rankings.
- 3rd or further withdrawal within a 12-month period: For any additional late withdrawal within the 12-months, the player will continue to receive a late withdrawal rankings penalty for each tournament in question.

3. Any disputes relating to late withdrawals must be directed to England Squash

[competitions.support@englandsquash.com](mailto:competitions.support@englandsquash.com)

- **Mid-Competition Withdrawal**

1. The Tournament Organiser may default a player if that player has not arrived on court by 15 minutes after the scheduled match time. Players who default a match in a tournament also default any subsequent scheduled matches. No ranking points will be awarded.
2. Players may be permitted to continue in the tournament at the discretion of the tournament organiser. In making these decisions, the TO will take into consideration the level of communication with the player, court availability, and any other relevant specific factors. In no case is the tournament organiser obligated to make special accommodations for a player.
3. If a player begins a competition but is unable to complete all scheduled matches due to illness or injury, they must inform the tournament desk in person or via a parent or guardian before leaving. Any reason for withdrawal must then be confirmed in email to England Squash ([competitions@englandsquash.com](mailto:competitions@englandsquash.com)) and the tournament organisers within 7 days of the competition. The email and reason for withdrawal must include a letter of explanation accompanied with a medical certificate.

*Failure to provide sufficient notice or a letter of explanation accompanied with a medical certificate within 7 days post competition will result in a default being awarded against your position with no ranking points allocated. Appendix B provides rules and flow.*

## 9 Late Arrival

All players are expected to be ready to play their match at the scheduled time regardless of whether the court is running early or behind schedule. If a player is not present at the scheduled time, this will be considered late arrival.

If a player is late for a match for a reason out of their control (i.e. traffic jam), the player/parent should contact the Tournament Organiser in the first instance with an estimated time of arrival. If the time of arrival is less than 15 minutes after the scheduled time every effort should be made to play the match.

If the time of arrival is more than 15 minutes after the scheduled time, the opponent will be handed a walkover and the player concerned will be permitted to play in the next round.

If a player is a “no show” or cannot give a valid reason for a late arrival, then the opponent will be handed a walkover and the player concerned will not be permitted to play in any further rounds.

## 10 Tournament Organisers

All England Squash Sanctioned Competitions will have a Tournament Organiser/Director appointed to whom all disputes relating to Entries, Scheduling and Refereeing aspects shall be referred. All Tournament Organisers will have successfully completed an online England Squash Tournament Organiser course. We aim to empower our Tournament Organisers within the guidelines of our Sanctioned Competitions to allow them to make decisions that will ultimately improve the overall experience of their competition. From time-to-time special dispensation may be granted in areas deemed appropriate by England Squash to ensure that Tournament Organisers can run their competition in a way they see appropriate. Tournament Organisers are encouraged to contact England Squash in the competition of any issues that may arise in the organisation of their competition.

## 11 Roles and Responsibilities

1. It is the Tournament Organisers responsibility to ensure their DBS and Safeguarding certificate are valid at the time of their competition. England Squash will cancel and remove any competition from the website that does not have the required safeguarding procedures in place to run their competition.
2. Tournament Organisers are responsible for completing and publishing draws upon receiving seedings from England Squash. As a guideline draws should be published and communicated to **ALL** entrants 7 days (Bronze and Copper), 2 weeks (Silver) or 2-3 weeks (Gold) prior to the competition.
3. Copper and Bronze Tournament Organisers will be responsible for deciding the draw format for each age category. Tournament Organisers may refer to England Squash for support. For more information on draw sizes and formats please appendix.
4. Silver, Gold and Platinum competition draw formats will be decided by England Squash.
5. England Squash empower tournament organisers to promote their own competitions. England Squash will act as the entry mechanism, and sanctioning body for the competitions. Responsibility to promote and encourage applications lies with tournament organiser. It is up the tournament organiser to engage the audience in their area that the competition will best suit. A more detailed overview of the audience of the competitions can be seen in the competition guide below. England Squash will support where possible tournament organisers in materials and advice on how to best run their competitions in keeping with our policies and guidelines.

Tournament Organisers are responsible for submitting the final finishing positions for their competition into Sport Manager. When the results have been confirmed, the Tournament Organiser must complete a claims form for payment of the entry fee payments minus the levy.

## 12 Competition Entries

1. The 2023-24 season will see several changes to the way in which entries are processed by England Squash. All entries for all sanctioned competitions will be run via [englandsquash.com](https://englandsquash.com), and the entry process will now be handled by our integration with Sport Manager. This means that the first time a player enters a competition they will be required to share their data with Sport Manager to enable Sport Manager to create them an account. England Squash will then use Sport Manager to process the data for competitions and competitions, and subsequently add results and rankings points.
2. There are a number of key benefits to the entry process which will be introduced throughout the upcoming season including the ability to view current player entry lists, greater Tournament Organiser functionality, accessible automated process' including player withdrawals.
3. Tournament Organisers will also be able to use Sport Manager to access data such as your name and email address to contact you in relation to any tournaments you've entered. Tournament Organisers will bound by [Data Processing Conditions](#) which means they can only access and use your data in relation to any tournaments have entered.

## 13 Tournament Software

1. All competitions sanctioned by England Squash for the 2023-24 season will be run using Sport Manager as the tournament software. This is mandatory for all sanctioned competitions.\* Training and support will be provided by England Squash.
2. All competition organisers must submit their competition final finishing positions into Sport Manager within 48 hours of their tournament finishing.

\*All TOs must use the tournament software, Sport Manager, for the duration of the competition for scheduling, submitting results and recoding withdrawals. Any TO not using Sport Manager will be subject to a 50% levy for their competition.

## 14 Disputes

- Any requests to England Squash for a decision on the rules or any other issues must be made by the participating player (parent and/or guardian) or the tournament organiser within seven days of the tournament finishing date to which it relates and must be sent in writing (by letter and/or email). England Squash reserves the right to request supporting documents and/or information that may be relevant to any dispute made. England Squash may in its absolute discretion consider any such request notwithstanding that the period of seven days has expired.
- England Squash will hold final decision over disputes which may arise under the rules and may impose such penalties on an individual/s as it deems appropriate (including without limitation, the allocation of points and/or the impositions of bans and/or fines). England Squash shall also delegate these powers to its disputes committee. The disputes committee must be made up of a minimum of 3 members one of which must be of the opposite gender.

- An appeal may be made against any decision of the Dispute Sub-Committee. All appeals must be made in written form (letter and/or email) and be received within 14 days of the original decision to which it relates. All appeals must be sent to England Squash.
- Any player or parent misconduct should be reported on the disciplinary report form. We hope that all organisers will adhere firmly to this disciplinary policy, and your co-operation is essential to the implementation of the necessary disciplinary procedures. Penalty measures for players will be strictly enforced by England Squash.

## **15 Competition Formats**

### **15.1 Copper Competitions**

Junior Sanctioned Copper competitions are entry level competitions aimed at juniors who are beginners and are based locally. For many players, Copper competitions will be their first competition experience. This level of competition therefore needs to be fun, engaging and social, leaving a positive and lasting impression that will inspire players to continue playing the sport of squash. Our aim for this season is to enhance the Copper competitions so that they can make a real connection with the intended target audience.

### **15.2 Entry Process:**

- On-line entry through ES website tournament software
- ES members & Non ES members can enter
- It is at the discretion of Tournament Organiser as to whether entries and/or fees will be accepted after the closing date

### **15.3 Tournament Software:**

- Sport Manager

### **15.4 Draw Format:**

- Best of 3 or 5 games
- Flexible scoring systems (must be communicated pre-competition)
- Introductory level ranking points awarded

### **15.5 Officiating:**

- All games to be officiated by players (both players from previous match – promote teamwork)

### **15.6 Entry fee:**

- £18 England Squash members or £23 non-members set ES entry fee
- (£4.50 ES members or £6.00 non-member levy retained per player by England Squash for ES members)



- £50 tournament registration fee refunded at end of competition pay out
- Optional souvenir provided by TO
- Closing date: 10 days/1 week pre-competition to be set by the tournament organiser
- No entry refund post-closing date

## **16 Bronze Competitions**

Junior Sanctioned Bronze competitions are aimed at juniors who play at a club or county level. Bronze competitions are the next step in the circuit pathway with an increased level of competition and more Junior Ranking points available. Bronze competitions will be offered as both a mixture of one and two-day competitions throughout the 2023-24 season. Players can expect to play up to 3 or 4 games over a one- or two-day competition depending on the format. Games will either be played as best of 3 or best of 5.

### **16.1 Entry Process:**

- On-line entry through ES website.
- All entrants to be ES active members.
- It is at the discretion of Tournament Organiser as to whether entries and/or fees will be accepted after the closing date.

### **16.2 Tournament Software:**

- Sport Manager

### **16.3 Draw Format:**

- Best of 3 or 5 games
- Seedings will be in line with our National Junior Rankings. TO's will be allowed to alter seedings with sufficient evidence.

### **16.4 Officiating:**

- All games to be officiated by players (both players from previous match to promote teamwork)

### **16.5 Entry Fee:**

- £22 set ES entry fee.
- (£5.50 levy fee per player retained by ES)
- £50 tournament registration fee refunded at end of competition pay out
- Optional souvenir provided by TO
- Closing date: 10 days/1 week pre-competition to be set by tournament organiser

- No entry refund post-closing date

## 17 Silver Competitions

Junior Sanctioned Silver competitions are 2- or 3-day competitions which attract higher ranked English players. Silver competitions are deemed selection competitions with players who are Nationally ranked encouraged to apply. Players can expect to play up to 4 or 5 games across the competition depending on draw sizes. There are several Silver competitions throughout the 2023-24 Junior Circuit season which will be geographically spread across the country so that they are accessible to all players. A greater number of Junior Ranking points are awarded in a Silver competition in comparison to a Bronze competition.

### 17.1 Entry Process:

- On-line entry through ES website and tournament software
- All entrants to be ES active members
- Entries after the closing date will not be accepted

### 17.2 Tournament Software:

- Sport Manager

### 17.3 Draw Format:

- Best of 5 games
- All Silver competitions **must run as Full Monrad draws** (unless agreed upon by England Squash) with all players playing through all stages of the competition into final finishing positions as part of the Monrad.
- Draws subject to caps where oversubscribed.
- Whereby we receive an odd number of entries below 25 players in a division, the final draw size will be capped at the nearest even entry size. The exception to this is draw sizes of 10 and 18, these will be capped at the nearest Monrad size of 8 and 16. Draw sizes of 15 will also be accepted as these guarantee all players 3 matches. Please see our Appendix for further details.

### 17.4 Officiating:

- Games to be officiated by a mixture of players (both players from previous match to promote teamwork) and England Squash appointed referees.

### 17.5 Entry Fee:

- £38 set ES entry fee
- (£11.40 levy per player retained by ES)
- Optional souvenir provided by TO
- Closing date: 3 weeks pre-competition
- No entry refund post-closing date

## 18 Gold Competitions

Junior Sanctioned Gold competitions are 3-4 day competitions and are considered as the most prestigious level of domestic junior squash tournament. Gold competitions are organised by our very best tournament organisers. The 2023-24 Junior Circuit season will have 2 Gold Sanctioned competitions. Players can expect to play up to 4 or 5 games over the course of the competition. Gold sanctioned competitions are deemed selection competitions and attract the highest ranked junior players from all age groups. A greater number of ranking points are awarded in a Gold competition compared to a Silver competition.

### 18.1 Entry Process:

- On-line entry through ES website and tournament software.
- All entrants to be ES active members.
- Entries after the closing date will not be accepted.

### 18.2 Tournament Software:

- Sport Manager

### 18.3 Draw Format:

- Best of 5 games
- All Gold competitions **must run as Full Monrad draws** with all players playing through all stages of the competition into final finishing positions as part of the Monrad.
- Draws subject to caps where oversubscribed.
- Whereby we receive an odd number of entries below 25 players in a division, the final draw size will be capped at the nearest even entry size. The exception to this is draw sizes of 10 and 18, these will be capped at the nearest Monrad size of 8 and 16. Draw sizes of 15 will also be accepted as these guarantee all players 3 matches. Please see our Appendix for further details.

### 18.4 Officiating:

- Games to be officiated by a mixture of players (both players from previous match to promote teamwork) and England Squash appointed referees.

### 18.5 Entry Fee:

- £50 set ES entry fee
- (£17.50 levy per player retained by ES)
- Optional souvenir provided by TO
- Closing date: 4 weeks pre-competition
- No entry refund post-closing date

## 19 Platinum Competitions

Junior Sanctioned Platinum competitions are 4-5-day competitions and are considered as the most prestigious level of domestic junior squash tournament. Platinum competitions include the British Junior Open, British Junior Championships (BJC) and English Junior Championships (EJC). Players can expect to play up to 4 or 5 games over the course of the competition. Platinum sanctioned competitions are deemed selection competitions and attract the highest ranked junior players from all age groups. A greater number of ranking points are awarded in a Platinum competition compared to a Gold competition.

### 19.1 Entry Process:

- On-line entry through ES website and tournament software.
- All entrants to be ES active members.
- Entries after the closing date will not be accepted.
- All entrants for the EJC must be eligible to represent England. Players who have represented other countries must have fallow year before being eligible to play for England.
- All entrants for the BJC must be nationals England, Wales, Scotland, Northern Ireland or Ireland.

### 19.2 BJC Eligibility:

- A player is eligible to represent England, Scotland, Wales or Ireland ('all-Ireland' via Northern Irish eligibility) in the BJC if he/she was born in the country, holds a British or British National Overseas passport, or is a citizen of, or became a naturalized citizen of, or has resided in the county for at the reduced time period of one year immediately preceding the Championship. A player who has reached the age of 18 on the final day of an event will be subject to the three-year rule stipulated in the WSF rules section K. [World Champ. Regs. – World Squash](#).
- Notwithstanding the above, a player is ineligible to participate if he/she has represented another country in the year (or three years if over 18) preceding the Start Date in a recognised International Squash Team or Individual Championship (.i.e. WSF World Championship, Regional Team or Individual Championship, official Match between MNFs in any age group). Note for general guidance: In the case of Individual Championships, where a player is entered by their National Federation into a World or Regional Individual Championship, a player would be deemed to have represented their nation. However, playing in a National Open event does not count towards eligibility. A player may only make one change using the reduced time period, and thereafter would be required to conform to the three-year period in respect of exercising an eligibility. In all cases of eligibility based upon residence, it is not permitted to do so based upon residence in respect of further education away from the family home, even if there is an intention to remain in the country afterwards i.e. the time period shall commence after the final day of the study period.
- In all cases where a player's eligibility is in doubt, supporting evidence must be provided to England Squash at least 21 days before the competition closing date so that the player's eligibility can be reviewed, and a decision made.

## 19.3 EJC Eligibility:

- A player is eligible to play in the EJC he/she was born in the country (England), or is a citizen of, or became a naturalized citizen of, or has resided in the England for at the reduced time period of one year immediately preceding the Championship. A player who has reached the age of 18 on the final day of an event will be subject to the three-year rule stipulated in the WSF rules section K. [World Champ. Regs. – World Squash](#).
- Notwithstanding the above, a player is ineligible to participate if he/she has represented another country in the year (or three years if over 18) preceding the Start Date in a recognised International Squash Team or Individual Championship (.i.e. WSF World Championship, Regional Team or Individual Championship, official Match between MNFs in any age group). Note for general guidance: In the case of Individual Championships, where a player is entered by their National Federation into a World or Regional Individual Championship, a player would be deemed to have represented their nation. However, playing in a National Open event does not count towards eligibility. A player may only make one change using the reduced time period, and thereafter would be required to conform to the three-year period in respect of exercising an eligibility. In all cases of eligibility based upon residence, it is not permitted to do so based upon residence in respect of further education away from the family home, even if there is an intention to remain in the country afterwards i.e. the time period shall commence after the final day of the study period.
- In all cases where a player's eligibility is in doubt, supporting evidence must be provided to England Squash at least 21 days before the competition closing date so that the player's eligibility can be reviewed, and a decision made.

## 19.4 Eligibility Appeals Procedures

- A player (or for this purpose the player's parents / carers or authorised representative) seeking review of their non-inclusion to the BJC or EJC must notify the England Squash in writing via email to [competitions@englandsquash.com](mailto:competitions@englandsquash.com) (request for review) within 2 days of the competition entry closing date. The request for review must set out in full the basis upon which the player wishes to appeal against the decision of the Competitions Team. On receipt of the request, the Competitions Team shall convene a review panel, normally comprising an England Squash Board member and 2 independent representatives. The request for review shall be sent to the Competitions Team, who has the opportunity to provide written comments to the panel Chair within 24 hours of receipt. The review panel members shall be sent the request for review, information from the Competitions Team and any other relevant supporting documentation. The review panel shall convene, either by conference call, or in person within three working days of receiving the relevant documentation.
- During the review panel meeting, the player, or their representative, will be given the opportunity to articulate their request for review personally if they wish to, either in person, or by conference call to the panel. Once the review panel has reached its decision, the Competitions Manager shall notify the player concerned of the decision in writing within 24 hours. The decision of the review panel is final, against which there is no further right of appeal.

## **19.5 Tournament Software:**

- Sport Manager

## **19.6 Draw Format:**

- Best of 5 games.
- All Platinum competitions must run as Full Monrad draws with all players playing through all stages of the competition into final finishing positions as part of the Monrad. - Draws subject to caps where oversubscribed.
- Whereby we receive an odd number of entries below 25 players in a division, the final draw size will be capped at the nearest even entry size. The exception to this is draw sizes of 10 and 18, these will be capped at the nearest Monrad size of 8 and 16. Draw sizes of 15 will also be accepted as these guarantee all players 3 matches. Please see our Appendix for further details.

## **19.7 Officiating:**

- Games to be officiated by a mixture of players which will involve both players from previous match to promote teamwork and/or England Squash appointed referees.

## **19.8 Entry fee:**

- £55 set ES entry fee
- Optional souvenir provided by TO
- Closing date: 4 weeks pre-competition
- No entry refund post closing date

## **20 COVID Policies**

Whilst UK Government restrictions have now been removed in the UK in relation to COVID-19, we will continue to monitor and apply all guidance as advised by the UK Government.

Clubs, facilities, and tournament organisers have the autonomy to apply their own guidance in relation to their facilities and competitions. Tournament Organisers will be required to communicate all guidance with England Squash before entries open for their competitions. Guidance applied by tournament organisers will be included as part of the entry terms and conditions and those entering the competition must abide by them. Failure to comply with the guidance may result in your entry being withdrawn or ranking points being withheld.

There are currently no requirements in the UK Government guidelines for the use of lateral flow tests for sports competitions, however we strongly recommend that tournament organisers request that all participants attending their competition test for COVID within 24 hours of the competition start date. If host venues require those attending to test for COVID before arriving at the venue, we will update this information as part of the online entry process.



## Appendix A: Sanctioned Events Regulations 2023/24

### Introduction

The following appendix is aimed to support Tournament Organisers with the available draw sizes at each tier of event dependent on the number of entrants on each event and the day format chosen. If an organiser wishes to run the event using a different format than specified in the guidelines below it must be put in writing to England Squash to approve. We empower our tournament organisers to run events with the ethos of trying to fit in the most matches for competitors as possible whilst fitting it in to a timely schedule. Any request in keeping with this will be accepted. We accept each event has different needs and that flexibility is required within this for tournament organisers to run the best event for all the competitors.

### Event Format

#### COPPER Events



All copper events are to be played in 1 day. A minimum of 3 matches is the guideline, however if less a best of 5 format will be used and players should be informed of this in advance of the publishing of the draw if the entry is low. The maximum number of matches in a day is 3 best of 5 matches or 5 best of 3 matches.

Number of Entrants	Draw Format	Number of Matches per player	Best of 3 or Best of 5 Games
2	Straight Final – Consult players on other possibilities and categories to get a full event	1	Best of 5
3	Round Robin	2	Best of 5
4	Round Robin	3	Best of 5 or best of 3
5	Round Robin	4	Best of 3
6	Two Round Robin Boxes of 3, with play off for position	3	Best of 5
7	Two Round Robin Boxes of 3 or 4 with play off for position	3/4	Best of 3
8	Two Round Robin Boxes of 4 or 8 Monrad draw	4 or 3	Best of 3 or best of 5
9	Three boxes of 3 with playoff for position or Two Round Robin Boxes or 4 or 5 with play off for position	3 or 4/5	Best of 5 or best of 5 for 2 boxes
10	Two Round Robin Boxes of 5 with play off for position	5	Best of 3

# REGULATIONS FOR SANCTIONED COMPETITIONS

11	8 Monrad draw with byes and the three-outside top 8 play a round robin for position, or 3 round robin boxes of 4 or 3 with winners playing off for position	3 or 4/5	Best of 5 or Best of 3
12	Four Round Robin Boxes of 3 with play offs for position, or Monrad draw with 4 byes	4 or 3	Best of 3
13	16 Monrad draw with 2 byes	3/4	Best of 3
14	16 Monrad draw with 2 byes	3/4	Best of 3
15	16 Monrad draw with 1 bye	3/4	Best of 3
16	16 Monrad draw or Round Robin 4 groups of 4 with winners playing off.	4 or 3/4/5	Best of 3
17-18	Round Robin 4 groups of 4 or 5 with winners playing off.	3/4/5	Best of 3
19	32 Monrad draw with byes, 3 first round losers play off in round robin	3/5	Best of 3
20-32	32 Monrad draw with byes	3/4/5	Best of 3
32	32 Monrad draw	5	Best of 3

## Bronze Events



Bronze events can be done in a 1 or 2 day format at the Tournament Organisers application request. A minimum of 3 matches is the guideline, however if less a best of 5 format will be used and players should be informed of this in advance if the entry is low before publication of the draw. The maximum number of matches in a day is 3 best of 5 matches or 5 best of 3 matches to be played in one day.

## One Day Bronze Events

Number of Entrants	Draw Format	Number of Matches per player	Best of 3 or Best of 5 Games
2	Straight Final – Consult players on other possibilities and categories to get a full event	1	Best of 5
3	Round Robin	2	Best of 5
4	Round Robin	3	Best of 5 or best of 3
5	Round Robin	4	Best of 3
6	Two Round Robin Boxes of 3, with play off for position	3	Best of 5
7	Two Round Robin Boxes of 3 or 4 with play off for position	3/4	Best of 3
8	Two Round Robin Boxes of 4 or 8 Monrad draw	4 or 3	Best of 3 or best of 5

# REGULATIONS FOR SANCTIONED COMPETITIONS



9	Three boxes of 3 with playoff for position or Two Round Robin Boxes or 4 or 5 with play off for position	3 or 4/5	Best of 5 for 3 boxes or best of 5 for 2 boxes
10	Two Round Robin Boxes of 5 with play off for position	5	Best of 3
11	8 Monrad draw with byes and the three-outside top 8 play a round robin for position, or 3 round robin boxes of 4 or 3 with winners playing off for position	3 or 4/5	Best of 5 or Best of 3
12	Four Round Robin Boxes of 3 with play offs for position, or Monrad draw with 4 byes	4 or 3	Best of 3
13	16 Monrad draw with 2 byes	3/4	Best of 3
14	16 Monrad draw with 2 byes	3/4	Best of 3
15	16 Monrad draw with 1 bye	3/4	Best of 3
16	16 Monrad draw or Round Robin 4 groups of 4 with winners playing off.	4 or 3/4/5	Best of 3
17-18	Round Robin 4 groups of 4 or 5 with winners playing off.	3/4/5	Best of 3
19	32 Monrad draw with byes, 3 first round losers play off in round robin	3/5	Best of 3
20-32	32 Monrad draw with byes	3/4/5	Best of 3
32	32 Monrad draw	5	Best of 3

## Two Day Bronze Events

Number of Entrants	Draw Format	Number of Matches per player	Best of 3 or Best of 5 Games
2	Straight Final – Consult players on other possibilities and categories to get a full event	1	Best of 5
3	Round Robin	2	Best of 5
4	Round Robin	3	Best of 5
5	Round Robin	4	Best of 5
6	Two Round Robin Boxes of 3, with play off for position	4	Best of 5
7	Two Round Robin Boxes or 3 or 4 with play off for position	3/4	Best of 5
8	Two Round Robin Boxes of 4 or 8 Monrad draw	4 or 3	Best of 5
9	Three boxes of 3 with playoff for position or Two Round Robin Boxes or 4 or 5 with play off for position	3 or 4/5	Best of 5
10	Two Round Robin Boxes of 5 with play off for position	5	Best of 5

# REGULATIONS FOR SANCTIONED COMPETITIONS

11	16 Monrad draw with byes and the three-outside top 8 play a round robin for position, or 3 round robin boxes of 4 or 3 with winners playing off for position	3 or 4/5	Best of 5
12	Four Round Robin Boxes of 3 with play offs for position, or Monrad draw with 4 byes	4 or 3	Best of 5
13	16 Monrad draw with 2 byes	3/4	Best of 5
14	16 Monrad draw with 2 byes	3/4	Best of 5
15	16 Monrad draw with 1 bye	3/4	Best of 5
16	16 Monrad draw or Round Robin 4 groups of 4 with winners playing off.	4 or 3/4/5	Best of 5
17-18	Round Robin 4 groups of 4 or 5 with winners playing off.	3/4/5	Best of 5
19	32 Monrad draw with byes, 3 first round losers play off in round robin	3/5	Best of 5
20-32	32 Monrad draw with byes	3/4/5	Best of 5
32	32 Monrad draw	5	Best of 5

## Silver Events



Silver Events can be run on a 2 or 3-day format at the Tournament Organisers application request. A minimum of 4 matches is the guideline, however if less a player should be informed of this in advance if the entry is low before publication of the draw. The maximum number of matches in a day is 3 for U13 and U11 and 2 a day for U15, U17 and U19. Full Monrad draws must be used where possible to comply with the demands of our computer software and to ensure the best competition for competitors. Where draw formats other than this are suggested with round robins, excessive byes, or less than the advertised number of games above, England Squash should be consulted, and players fully notified of the nature of the draw. Due to the number of entries sometimes it isn't possible to get a perfect clean draw and it is key competitors are fully aware of the draw format on draw publication.

Number of Entrants	Draw Format	Number of Matches per player	Best of 3 or Best of 5 Games
2	Straight Final – Consult players on other possibilities and categories to get a full event	1	Best of 5
3	Round Robin	2	Best of 5
4	Round Robin	3	Best of 5
5	Round Robin	4	Best of 5
6	Two Round Robin Boxes of 3, with play off for position	4	Best of 5
7	Two Round Robin Boxes or 3 or 4 with play off for position	3/4	Best of 5

# REGULATIONS FOR SANCTIONED COMPETITIONS

8	8 monrad draw	3	Best of 5
9	Three boxes of 3 with playoff for position	3	Best of 5
10	Two boxes of 5 with playoff for position	5	Best of 5
11	16 monrad draw with byes and the three-outside top 8 play a round robin for position	4/3	Best of 5
12	16 monrad draw with 4 byes	4/3	Best of 5
13	16 monrad draw with 3 byes	3/4	Best of 5
14	16 monrad draw with 2 byes	3/4	Best of 5
15	16 monrad draw with 1 bye	3/4	Best of 5
16	16 monrad draw	4	Best of 5
17/18	16 monrad draw with 1/2 reserves	4	Best of 5
19	2 day event – 16 A Draw, and 3 reserve list	3/4/5	Best of 5
20	4 qualify matches 4 winners into 16 monrad. 4 losers into round robin for position 17-20	3/5	Best of 5
21-23	4 qualify matches 4 winners into 16 monrad. 1-3 reserves. 4 losers into round robin for position 17-20	3/4/5	Best of 5
24	32 Monrad with 8 byes	4/5	Best of 5
25-27	32 Monrad with 8 byes, 1-3 reserves	4/5	Best of 5
28	32 Monrad with 4 byes	4/5	Best of 5
29-31	32 Monrad with 4 byes, 1-3 reserves	4/5	Best of 5
32	3 day event - 32 monrad draw	4/5	Best of 5
32+	3 day event - 32 monrad draw with reserves applying the same principle as 16-31.	4/5	Best of 5

## Gold Events



Gold Events can be run on a 3-day or 4-day format at the Tournament Organisers application request. 4-day formats are mainly if the event chooses to apply qualification rounds prior to the event, this will be clearly notified on entry, any further use of a 4 day format will be at the discretion of England Squash and will be clearly notified prior to the event. A minimum of 4 matches is the guideline, however if less a player should be informed of this in advance if the entry is low before publication of the draw. The maximum number of matches in a day is 3 for U13 and U11 and 2 a day for U15, U17 and U19. Full Monrad draws must be used where possible to comply with the demands of our computer software and to ensure the best competition for competitors. Where draw formats other than this are suggested with round robins, excessive byes, or less than the advertised number of games above, England Squash should be consulted, and players fully notified of the nature of the draw. Due to the number of entries sometimes it isn't possible to get a perfect clean draw and it is key competitors are fully aware of the draw format on draw publication.

# REGULATIONS FOR SANCTIONED COMPETITIONS

Number of Entrants	Draw Format	Number of Matches per player	Best of 3 or Best of 5 Games
2	Straight Final – Consult players on other possibilities and categories to get a full event	1	Best of 5
3	Round Robin	2	Best of 5
4	Round Robin	3	Best of 5
5	Round Robin	4	Best of 5
6	Two Round Robin Boxes of 3, with play off for position	4	Best of 5
7	Two Round Robin Boxes or 3 or 4 with play off for position	3/4	Best of 5
8	8 monrad draw	3	Best of 5
9	Three boxes of 3 with playoff for position	3	Best of 5
10	Two boxes of 5 with playoff for position	5	Best of 5
11	16 monrad draw with byes and the three-outside top 8 play a round robin for position	4/3	Best of 5
12	16 monrad draw with 4 byes	4/3	Best of 5
13	16 monrad draw with 3 byes	3/4	Best of 5
14	16 monrad draw with 2 byes	3/4	Best of 5
15	16 monrad draw with 1 bye	3/4	Best of 5
16	16 monrad draw	4	Best of 5
17/18	16 monrad draw with 1/2 reserves	4	Best of 5
19	2 day event – 16 A Draw, and 3 reserve list	3/4/5	Best of 5
20	4 qualify matches 4 winners into 16 monrad. 4 losers into round robin for position 17-20	3/5	Best of 5
21-23	4 qualify matches 4 winners into 16 monrad. 1-3 reserves. 4 losers into round robin for position 17-20	3/4/5	Best of 5
24	32 Monrad with 8 byes	4/5	Best of 5
25-27	32 Monrad with 8 byes, 1-3 reserves	4/5	Best of 5
28	32 Monrad with 4 byes	4/5	Best of 5
29-31	32 Monrad with 4 byes, 1-3 reserves	4/5	Best of 5
32	3 day event - 32 monrad draw	4/5	Best of 5
32+	3 day event - 32 monrad draw with reserves applying the same principle as 16-31.	4/5	Best of 5

## Platinum Events

# REGULATIONS FOR SANCTIONED COMPETITIONS



Platinum events are national events can be run on a 4-day or 5-day format and organised by England Squash. 5-day formats are mainly if the event chooses to apply qualification rounds prior to the event, this will be clearly notified on entry, any further use of a 5 day format will be at the discretion of England Squash and will be clearly notified prior to the event. A minimum of 4 matches is the guideline, however if less a player should be informed of this in advance if the entry is low before publication of the draw. The maximum number of matches in a day is 3 for U13 and U11 and 2 a day for U15, U17 and U19. Full Monrad draws must be used where possible to comply with the demands of our computer software and to ensure the best competition for competitors. Where draw formats other than this are suggested with round robins, excessive byes, or less than the advertised number of games above, England Squash should be consulted, and players fully notified of the nature of the draw. Due to the number of entries sometimes it isn't possible to get a perfect clean draw and it is key competitors are fully aware of the draw format on draw publication.

Number of Entrants	Draw Format	Number of Matches per player	Best of 3 or Best of 5 Games
2	Straight Final – Consult players on other possibilities and categories to get a full event	1	Best of 5
3	Round Robin	2	Best of 5
4	Round Robin	3	Best of 5
5	Round Robin	4	Best of 5
6	Two Round Robin Boxes of 3, with play off for position	4	Best of 5
7	Two Round Robin Boxes or 3 or 4 with play off for position	3/4	Best of 5
8	8 monrad draw	3	Best of 5
9	Three boxes of 3 with playoff for position	3	Best of 5
10	Two boxes of 5 with playoff for position	5	Best of 5
11	16 monrad draw with byes and the three-outside top 8 play a round robin for position	4/3	Best of 5
12	16 monrad draw with 4 byes	4/3	Best of 5
13	16 monrad draw with 3 byes	3/4	Best of 5
14	16 monrad draw with 2 byes	3/4	Best of 5
15	16 monrad draw with 1 bye	3/4	Best of 5
16	16 monrad draw	4	Best of 5
17/18	16 monrad draw with 1/2 reserves	4	Best of 5
19	2 day event – 16 A Draw, and 3 reserve list	3/4/5	Best of 5
20	4 qualify matches 4 winners into 16 monrad. 4 losers into round robin for position 17-20	3/5	Best of 5

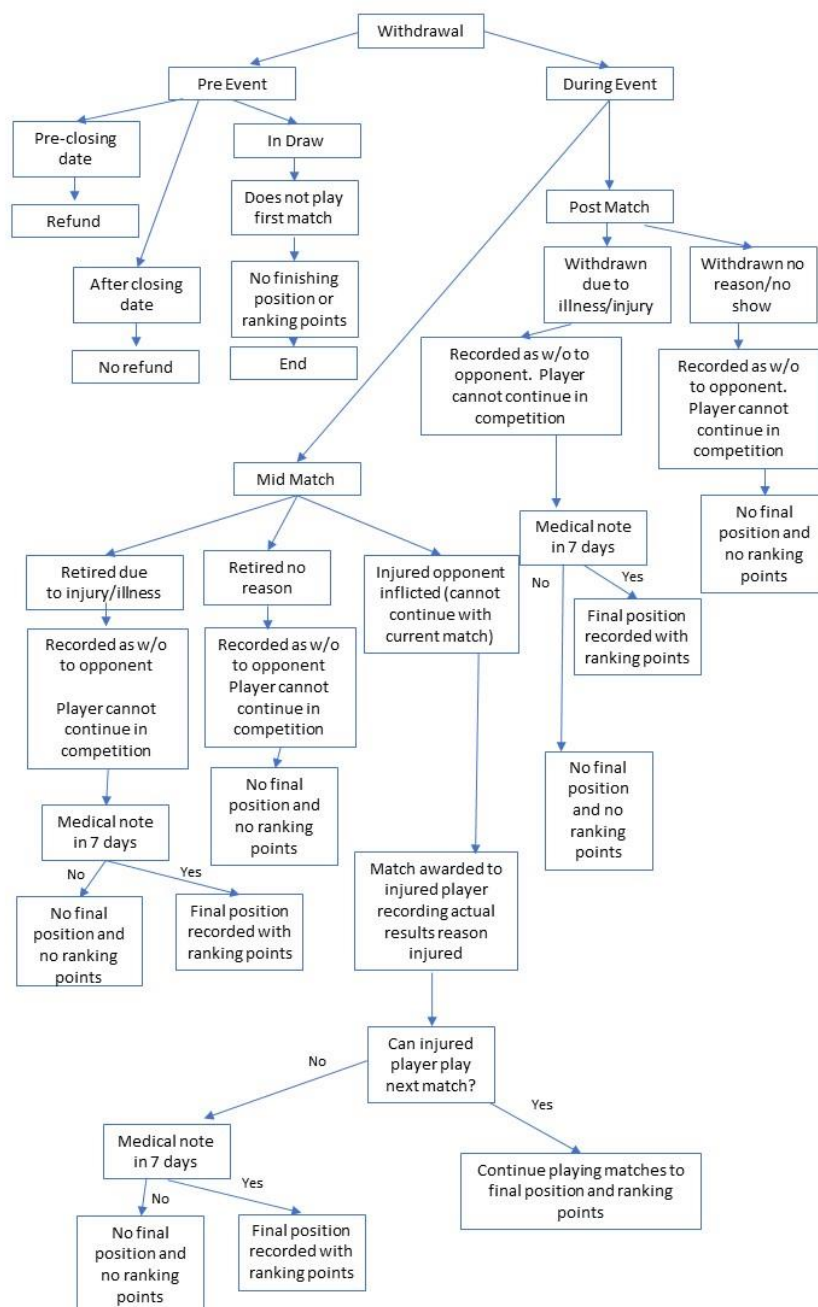


# REGULATIONS FOR SANCTIONED COMPETITIONS



21-23	4 qualify matches 4 winners into 16 monrad. 1-3 reserves. 4 losers into round robin for position 17-20	3/4/5	Best of 5
24	32 Monrad with 8 byes	4/5	Best of 5
25-27	32 Monrad with 8 byes, 1-3 reserves	4/5	Best of 5
28	32 Monrad with 4 byes	4/5	Best of 5
29-31	32 Monrad with 4 byes, 1-3 reserves	4/5	Best of 5
32	3-4 day event - 32 monrad draw	4/5	Best of 5
32+	3-4 day event - 32 monrad draw with reserves applying the same principle as 16-31.	4/5	Best of 5

## Appendix B: Sanctioned Events Withdrawal Rules/Flow



If withdrawn: players in subsequent matches get walkovers