

# REGULATIONS FOR SANCTIONED COMPETITIONS



## Contents

1	General	2-3
2	Safeguarding including photography and video recording policy	3-4
3	Competition Entries	4-5
4	Withdrawals and Refunds	5-7
5	Disputes	8
6	Seeding	9-11
7	Ranking	12
8	Copper	13-14
9	Bronze	14-15
10	Silver	16
11	Gold	17
12	Platinum	18-22
	Appendix A: Sanctioned Events Withdrawal Rules/Flow	23
	Appendix B: Tournament Organisers Information	24-37

# REGULATIONS FOR SANCTIONED COMPETITIONS



*These rules and regulations are written and updated by England Squash for the purposes of junior sanctioned competitions. England Squash reserves the right to update these rules and regulations at any time and without notification to ensure the spirit of competition and to safeguard all parties involved.*

All Sanctioned Competitions must meet the following criteria.

## 1. General

Venues	1.1	All matches must be played on courts affiliated to England Squash and organised by an affiliated club.
Rules	1.2	Matches shall be played under the Rules of the Game unless approved or directed by England Squash. Rules can be found at: <a href="http://www.worldsquash.org">www.worldsquash.org</a>
Code of Conduct	1.3	All players, coaches, parents, tournament organisers and attendee must follow the England Squash Code of Conduct for Players. For more information and printable versions of each document, please <a href="#">click here</a>
Eyewear	1.4	<a href="#">WSF certified</a> or British Standard BS7930.1 protective eyewear is mandatory for participation in all sanctioned England Squash competitions. Eyewear must be always worn by all junior players while on court. This includes appropriate prescriptive protective eyewear or iMask in front of spectacles.
Clothing	1.5	<p>All players must wear clothing suitable for squash including non-marking soles. Please refer to the specific venue policy for further information.</p> <p>Players competing in matches at Platinum, Gold and Silver competitions, or where steaming is taking place must not wear the same-coloured top as their opponent. All players are required to bring a minimum of two different coloured tops to all matches they are scheduled to play in. In the competition that two players are wearing the same-coloured top for a match, the lower seeded player must change into their second top to prevent any clashes.</p>
Balls	1.6	The England Squash Official Ball must be used for all matches. A double dot competition ball must be used at all competition levels from Bronze to Platinum. A single dot ball may be used for all Boys and Girls U9 competitions and at Copper level for Girls and Boys U11.
Player Referee marking	1.7	During all junior competitions, junior players are required to mark matches. Both players from the match are expected to referee/mark together and must

# REGULATIONS FOR SANCTIONED COMPETITIONS



		be ready and present immediately following the completion of their match. By entering a competition, the participating player is agreeing to be bound by such terms unless special dispensation is requested in writing to <a href="mailto:competitions@englandsquash.com">competitions@englandsquash.com</a> and to the tournament organiser. A player not fulfilling their refereeing responsibilities or who abandons their refereeing responsibilities will be marked as a default with zero points being awarded for their participation in the competitions and against their ranking.
Scoring	1.8	<p>All events and age categories will be played point a rally (PAR) scoring to 11. Should players reach 10-10 in any game a tie break will operate, the winner needing 2 clear points to win.</p> <p>Should a round robin format be played, and the number of matches is equal between any players, the winner will be decided on games won. Should the number of games be equal then it is then decided on points difference.</p>

## 2. Safeguarding including photography and video recording policy

	2.1	The England Squash safeguarding policy including details on photography and video recording is available by <a href="#">clicking here</a> .
	2.2	Tournament Organisers will be able to use Sport Manager to access data such as your name and email address to contact you in relation to any tournaments entered. Tournament Organisers will bound by <a href="#">Data Processing Conditions</a> which means they can only access and use data in relation to any tournaments entered.
	2.3	<ul style="list-style-type: none"> <li>By entering an England Squash sanctioned competition, you consent for you/your child to be filmed, and publicity connected with, the competition, including on court video recording, media interviews, photographs, TV footage and live streaming of matches. Unless the Tournament Organisers is informed in writing before the commencement of the competition.</li> <li>In accordance with our Child Protection Policy, we will not permit photographs, video, or other images of children/young people to be taken without the consent of the parent or guardian.</li> <li>These photographs or videos will be used by England Squash, their partners, and the press and will be used for promotional purposes and used in an appropriate manner.</li> </ul>

# REGULATIONS FOR SANCTIONED COMPETITIONS



		<ul style="list-style-type: none"> <li>• The images and videos may be reproduced in magazine articles, websites, leaflets, posters, social media, or any other appropriate publication that promotes and publicises the game of squash and squash 57, and the work of England Squash.</li> <li>• England Squash will take all possible steps to ensure these images and videos are used solely for the purposes they are intended. If you become aware that these images are being used inappropriately, please inform England Squash immediately.</li> <li>• England Squash owns all rights, copyright title and ownership of these photographs and videos in perpetuity.</li> </ul>
--	--	---

## 3. Competition Entries

	3.1	Entrants must be an England Squash member on the last day of the competition, except for Copper events.
	3.2	All entrants must have an England Squash account with a linked Sport Manager account, with Copper competitions being the exception.
	3.3	All entries must be made through the tournament software Sport Manager and payment must be at time of entry.
	3.4	Entrants must be under the maximum age as of the last day of the competition to be eligible to compete in their respective age category.
	3.5	Age categories are as follows: Boys and Girls U9s, U11s, U13s, U15s, U17s and U19s.
	3.6	<p>Players may only enter 1 age category per competition in Platinum, Gold and Silver competitions.</p> <p>For Bronze and Copper competitions players can enter 2 age categories providing those age groups are on separate days and receive 2 sets of ranking points.</p> <p>If age categories are merged, players may only receive rankings points for 1 age category. Players may choose which age category their points go towards.</p>
	3.7	Whilst every effort will be made to check all entries, it is ultimately the responsibility of the participant to ensure that their entry complies with the entry policies. This includes correct England Squash membership details (date of birth and gender) and entry into the correct age category and/or competition. It

# REGULATIONS FOR SANCTIONED COMPETITIONS



		is at the discretion of England Squash as to whether entries made in error will be accepted.
	3.8	By entering a competition, entrants are agreeing to abide by all terms and conditions of entry. Failure to comply with the guidance may result in your entry being withdrawn or ranking points being withheld.
	3.9	Due to the high demand for positions in Silver, Gold, and Platinum competitions, draw sizes will be capped. Any additional entries outside of the draw size will be placed on a waitlist pending withdrawal. <i>*See sections 10,11 &amp; 12 for further details on draw sizes. *</i>
	3.10	<u>England Squash will not be held liable for any expenses incurred by those placed on waitlists.</u> We advise that all players when making bookings for tournaments should use services with a full comprehensive refund policy.
	3.11	The waitlist will be issued with the seeding for each draw. Once on the waitlist and seedings are issued players are not permitted to move to another age category, if applicable. Players may only move age categories if advised in advance of the seedings and waitlists being issued.
	3.12	The waitlist will be issued in the order of player ranking.  If a player does not have a ranking the order of the waitlist will be based on the earliest entry, for Bronze and Copper competitions only.

## 4. Withdrawals and Refunds

	4.1	Withdrawals pre-competition must be made via the Sport Manager account. No refunds will be given to withdrawals after the closing date. See the England Squash <a href="#">help guides</a> for full details and instructions.
	4.2	Withdrawals from any competition after the closing date (including withdrawals from the plate) must notify the tournament organiser or England Squash as soon as possible pre-competition or on the day with a valid reason. There will be no refund when withdrawing after the closing date. Refunds will only be provided if a player does not make a draw, or a grade is cancelled. All other exceptions are at the discretion of the Tournament Organiser or England Squash.

# REGULATIONS FOR SANCTIONED COMPETITIONS



		<p>Any reason for withdrawal after the closing date must then be confirmed in an email to England Squash and the tournament organisers within 7 days of the competition.</p> <p>In the case of withdrawal during a competition due to illness or injury this must be accompanied by a letter of explanation and a medical certificate where appropriate in order to receive rankings points.</p>
	4.3	No player shall enter two or more competitions if the published dates of the competitions overlap. Any player deemed to have entered two or more competitions for the purpose of withdrawing from one after the closing date will not receive a refund of their entry fee.
	4.4	Upon entering a competition, participants are expected to play in all scheduled games to which they are involved and must be prepared to play at the times stated for each competition. No games shall be conceded before or during the competition unless agreed to by the tournament organiser and/or England Squash, this is only relevant for Bronze and Copper competitions.
	4.5	<p>If a player is late for a match for a reason out of their control (i.e. traffic jam), the player/parent should contact the Tournament Organiser in the first instance with an estimated time of arrival. If the time of arrival is less than 15 minutes after the scheduled time every effort should be made to play the match. If the time of arrival is more than 15 minutes after the scheduled time, the opponent will be handed a walkover and the player concerned will be permitted to play in the next round.</p> <p>If a player is a “no show” or cannot give a valid reason for a late arrival, then the opponent will be handed a walkover and the player concerned will not be permitted to play in any further rounds.</p>
	4.6	All players are expected to be ready to play their match at the scheduled time regardless of whether the court is running early or behind schedule. If a player is not present at the scheduled time, this will be considered late arrival.
	4.7	In case of dispute over the validity of the reason of withdrawal tournament organiser must notify England Squash within 7 days. England Squash will then have the authority to validate the rationale and have the final decision on the points allocation.
	4.8	England Squash and/or the tournament organiser will not be liable for any expenses incurred because of a competition being cancelled or postponed. All expenses are at the sole risk of the entrant. We advise all entrants to search for accommodation and travel with a comprehensive refund policy.
	4.9	Appendix A in this document provides withdrawal rules and flow.

# REGULATIONS FOR SANCTIONED COMPETITIONS



	4.10	For all junior competitions, a player may withdraw without penalty, pertaining to section 4.11 below, before 12:00pm on the Monday prior to the start of the tournament. Any withdrawal after this deadline and before the start of a player's first match is considered a late withdrawal. Any player who is registered for a competition and does not show up to play is also considered a late withdrawal. All withdrawals and any refunds are subject to the conditions in section 4: Withdrawals.
	4.11	<p>Penalties for late withdrawals are as follows:</p> <ul style="list-style-type: none"> <li>- 1st late withdrawal within a 12-month period: No penalty, but the late withdrawal will be noted on the player's record.</li> <li>- 2nd withdrawal within an 12-month period: The player receives a rankings penalty. The penalty is a zero-point tournament being added to the player's record. The zero-point tournament counts as a tournament exposure and will be treated like any other tournament with regards to rankings.</li> <li>- 3rd or further withdrawal within a 12-month period: For any additional late withdrawal within the 12-months, the player will continue to receive a late withdrawal rankings penalty for each tournament in question.</li> </ul>
	4.12	Any disputes relating to late withdrawals must be directed to England Squash <a href="mailto:competitions@englandsquash.com">competitions@englandsquash.com</a>
	4.13	<p>If a player begins a competition but is unable to complete all scheduled matches due to illness or injury, they must inform the tournament desk in person or via a parent or guardian before leaving. Any reason for withdrawal must then be confirmed in email to England Squash (<a href="mailto:competitions@englandsquash.com">competitions@englandsquash.com</a>) and the tournament organisers within 7 days of the competition. The email and reason for withdrawal must include a letter of explanation accompanied with a medical certificate.</p> <p><u><i>Failure to provide sufficient notice or a letter of explanation accompanied with a medical certificate within 7 days post competition will result in a default being awarded against your position with no ranking points allocated. Appendix A provides rules and flow.</i></u></p>

# REGULATIONS FOR SANCTIONED COMPETITIONS



## 5. Disputes

	5.1	Any requests to England Squash for a decision on the rules or any other issues must be made by the participating player (parent and/or guardian) or the tournament organiser within seven days of the tournament finishing date to which it relates and must be sent in writing (by letter and/or email). England Squash reserves the right to request supporting documents and/or information that may be relevant to any dispute made. England Squash may in its absolute discretion consider any such request notwithstanding that the period of seven days has expired.
	5.2	England Squash will hold final decision over disputes which may arise under the rules and may impose such penalties on an individual/s as it deems appropriate (including without limitation, the allocation of points and/or the impositions of bans and/or fines). England Squash shall also delegate these powers to its disputes committee. The disputes committee must be made up of a minimum of 3 members one of which must be of the opposite gender.
	5.3	<p>An appeal may be made against any decision of the Dispute Sub-Committee. All appeals must be made in written form (letter and/or email) and be received within 14 days of the original decision to which it relates. All appeals must be sent to England Squash.</p> <p>Any player or parent misconduct should be reported on the disciplinary report form. (This form can be requested by emailing <a href="mailto:competitions@englandsquash.com">competitions@englandsquash.com</a>).</p>
	5.4	Any player or parent misconduct should be reported on the disciplinary report form. We hope that all organisers will adhere firmly to this disciplinary policy, and your co-operation is essential to the implementation of the necessary disciplinary procedures. Penalty measures for players will be strictly enforced by England Squash.



# REGULATIONS FOR SANCTIONED COMPETITIONS



## 6. Seeding

	6.1	The rankings for the month in which entry closes will be used to determine the seedings for the competition. i.e. if the closing date is 25 <sup>th</sup> May then the current May rankings will be used.
	6.2	<b>Squash levels will not be used for seeding.</b>
Seeding brackets	6.3	<p>When draws are created the 1 &amp; 2 seeded players are placed at the top and bottom of the draw, the rest of the draw placed as follows:</p> <ul style="list-style-type: none"> <li>• 3-4 seeds are drawn and placed randomly</li> <li>• 5-8 seeds are drawn and placed randomly</li> <li>• 9-16 seeds are drawn and placed randomly</li> <li>• 17-32 seeds are drawn and placed randomly</li> <li>• 33-64 seeds are drawn and placed randomly</li> </ul> <p>Randomly = randomly selected by the tournament software.</p> <p>Once the draws are issued no further changes will be made to the seedings, except if there is a withdrawal. Seeds will be changes as follows:</p> <ul style="list-style-type: none"> <li>• If no.1 seed withdraws: no.2 seed becomes 1 seed; top 3-4 seed moves up to 2 seed; top 5-8 seed moves up to 3-4 seed; top 9-16 seed from rankings moves up to 5-8 seed; top 17-32 seed from rankings moves up to 9-16 seed. Bye goes to top seed</li> <li>• No.2 seed withdraws: top 3-4 seed moves up to 2 seed; top 5-8 seed moves up to 3-4 seed; top 9-16 seed from rankings moves up to 5-8 seed; top 17-32 seed from rankings moves up to 9-16 seed. Highest seed gets the bye</li> <li>• 3-4 seed withdraws: top 5-8 seed moves up to 3-4 seed; top 9-16 seed from rankings moves up to 5-8 seed; top 17-32 seed from rankings moves up to 9-16 seed. Highest seed gets the bye</li> <li>• 5-8 seed withdraws: top 9-16 seed from rankings moves up to 5-8 seed; top 17-32 seed from rankings moves up to 9-16 seed. Highest seed gets the bye</li> <li>• 9-16 seed withdraws: top 17-32 seed from rankings moves up to 9-16 seed. Highest seed gets the bye</li> </ul>

# REGULATIONS FOR SANCTIONED COMPETITIONS



<b>Bronze and Copper</b>		
	6.4	All Seeding for Bronze and Copper competitions should be managed by the tournament organiser using the England Squash Ranking system. Tournament organisers may request the input from England Squash.
	6.5	The England Squash Ranking system should be the primary method of seeding. In exceptional circumstances a player may be moved to a top 8 position if suitable justification can be offered.
	6.6	All seeding related questions must be directed towards the tournament organiser.
<b>Silver, Gold and Platinum</b>		
	6.7	For Silver, Gold and Platinum events a seeding panel will manually seed the top 8 seeds per age group. This will be based on ranking, finishing positions in recent major events, recent results and head to heads. The remainder of the seedings will revert to the latest ES ranking at the time of entry closing.
	6.8	The seeding panel will be chaired by a Performance Coach, supported by other nominated coach(es) of suitable expertise and knowledge. This nominated coach(es) may change from event to event.
	6.9	<p>The seedings will be issued within 4 days of the closing date for review. The review period will be 48 hours after issuing. Any queries or questions raised after this time will not be considered.</p> <p>Seeding queries must be made via the online form sent out for each competition.</p> <p>No email queries will be accepted.</p>
International Entries	6.10	International players will be seeded manually based on information from NGBs and other competition ranking information. International players should also provide a note on their entry and email <a href="mailto:juniorcompetitions@englandsquash.com">juniorcompetitions@englandsquash.com</a> with any relevant statistics.
	6.11	<p>Injury:</p> <ul style="list-style-type: none"> <li>• Players that are injured for a period of over 3 months are eligible to submit a seeding request</li> <li>• This must be submitted prior to entry closing date by email to: <a href="mailto:juniorcompetitions@englandsquash.com">juniorcompetitions@englandsquash.com</a>.</li> </ul>

# REGULATIONS FOR SANCTIONED COMPETITIONS



		<ul style="list-style-type: none"><li>• This must be complemented with medical information for the panel to consider. This must include details on the type of injury, medical advice on the time away from competition and return to competition, and previous significant results in Silver, Gold or Platinum events in the 6 months prior to injury,</li><li>• Seeding will be based on previous rankings and results in the 6 months prior to injury in comparison to the other players within each event,</li><li>• The seeding panel will determine the number of events this will be valid for based on the amount of time away from competition,</li><li>• The seeding panel may review the seeding position event by event on return to competition based on the form demonstrated in coming back into competition.</li></ul>
	6.12	<b>Exceptional Circumstance</b> <ul style="list-style-type: none"><li>• England Squash reserves the right to seed players differently to ranking in the case of exceptional circumstances. Whether a player is eligible for this will be decided by the seeding panel.</li><li>• The seeding panel's decision is final.</li></ul>

# REGULATIONS FOR SANCTIONED COMPETITIONS



## 7. Ranking

Aging up	7.1	All players will receive 50% of ranking points in the upper age group 2 months before their month of birth. i.e. if the birthday is in November, a player will get 50% of their points on 1st September rankings.
	7.2	<p>GU9 – if at least 4 girls do not enter a competition, those that enter have a choice to either play up in the GU11 competition, mix with the boys U9 competition or a full refund.</p> <p>If a girl chooses to mix into the BU9 category they will receive GU9 ranking points. If a girl chooses to enter the GU11 category they may choose which age group they receive their rankings points to go towards.</p> <p>If an U9 category is mixed, girls may receive ranking points for their finishing positions based solely on girls entries i.e. finished 4<sup>th</sup> in MU9, as the 1<sup>st</sup> girl placed, they will receive 1<sup>st</sup> place ranking points.</p>
	7.3	<p>At both Bronze and Copper sanctioned competitions, requests may be made for girls to play in a boy's category, irrespective of whether there is a girl's category they can enter, as these are deemed participation level competitions. Any requests must be sent directly to England Squash by email to <a href="mailto:competitions@englandsquash.com">competitions@englandsquash.com</a> and must be supported by justifiable reasoning. All requests will be considered by England Squash.</p> <p>Girls will not receive ranking points should they choose to play in the boy's event if there is a suitable Girls event available in the competition.</p> <p>Boys are not permitted to play in girls' categories.</p>
	7.4	<p>Updated rankings points list for 2024-2025 - <a href="https://www.englandsquash.com/competitions/junior/rankings">https://www.englandsquash.com/competitions/junior/rankings</a></p>

# REGULATIONS FOR SANCTIONED COMPETITIONS



## 8. Copper

Copper level competitions are beginner level events aimed at local players, who are starting their competition journey. This level of competition therefore needs to be fun, engaging and social, leaving a positive and lasting impression that will inspire players to continue playing the sport of squash.

Entry information	8.1	<ul style="list-style-type: none"> <li>On-line entry through Sport Manager</li> <li>England Squash members &amp; Non ES members can enter</li> <li>£19 England Squash members or £24 non-members set ES entry fee</li> <li>Closing date: 1 week pre-competition</li> <li>Acceptances based on first come first served – additional players will be place on a waitlist</li> </ul>
Formats	8.2	<ul style="list-style-type: none"> <li>Please see appendix B for approved draw formats</li> <li>Matches should be played best of 3, Par 11 scoring</li> <li>Players may use either blue, red or single dot balls.</li> </ul>
	8.3	<p><u>A minimum of 3 scheduled matches will be provided for all players.</u> Where only 2 or less scheduled matches are guaranteed the tournament organiser will provide advanced notice with the option to withdraw with a full refund.</p> <p>Players are expected to complete all scheduled matches. Late withdrawals or injuries may lead to some players receiving 2 or fewer matches.</p>
	8.4	<p>Categories may be merged when necessary to ensure a minimum of 3 matches is achievable.</p> <p>Where categories are merged the rankings, allocation will work in the following way; Players will receive their ranking points at the category in which they entered. Players will be listed in order of which they finished within their own category.</p> <p>For example, if 2 GU11 players are merged with 3 GU13 players, the GU11 players will receive ranking points with the finishing positions 1<sup>st</sup> and 2<sup>nd</sup> place, regardless of their finishing places in the merged category. The same will apply to the GU13 players.</p>

# REGULATIONS FOR SANCTIONED COMPETITIONS



	8.5	For County Closed competitions, players can play in more than one age category. Players will receive ranking points for the age category originally entered, unless agreed otherwise with England Squash.
	8.6	Players are recommended to have a minimum of 30 minutes for U13 matches and up to an hour for U15-U19 matches between scheduled match start times, or less on agreement of all parties and where practical.

## 9. Bronze

Junior Sanctioned Bronze competitions are aimed at juniors who play at a club or county level. Bronze competitions are the next step in the circuit pathway with an increased level of competition and more Junior Ranking points available. Bronze competitions will be offered as both a mixture of one and two-day competitions throughout the 2024-25 season. Players can expect to play up to 3 or 4 games over a one-day or two-day competition depending on the format.

Entry information	9.1	<ul style="list-style-type: none"> <li>On-line entry through Sport Manager</li> <li>England Squash members</li> <li>£23</li> <li>Closing date: 2 weeks pre-competition</li> <li>Acceptances based on first come first served – additional players will be placed on a waitlist</li> </ul>
Formats	9.2	<ul style="list-style-type: none"> <li>Draws will be a maximum of 16 (please see appendix B for approved draw formats)</li> <li>Best of 3 or 5 games depending on entry numbers</li> </ul>
	9.3	<p><u>A minimum of 3 scheduled matches will be provided for all players.</u> Where only 2 or less scheduled matches are guaranteed the tournament organiser will provide advanced notice with the option to withdraw with a full refund.</p> <p>Players are expected to complete all scheduled matches. Late withdrawals or injuries may lead to some players receiving 2 or fewer matches.</p>
	9.4	<p>Categories may be merged when necessary to ensure a minimum of 3 matches is achievable.</p> <p>Where categories are merged the rankings allocation will work in the following way; Players will receive their ranking points at the category in which they entered providing 2 or more players have entered in that category. Players will</p>

# REGULATIONS FOR SANCTIONED COMPETITIONS



		<p>be listed in order of which they finished within their own category. For example, if 2 GU11 players are merged with 3 GU13 players, the GU11 players will receive ranking points with the finishing positions 1<sup>st</sup> and 2<sup>nd</sup> place, regardless of their finishing places in the merged category. The same will apply to the GU13 players.</p> <p>Where categories are merged the ranking points allocated based on the category players entered unless requested otherwise.</p> <p>Players will be listed in order of which they finished within their own category. For example, if 2 GU11 players are merged with 3 GU13 players, the GU11 players will receive ranking points with the finishing positions 1<sup>st</sup> and 2<sup>nd</sup> place, regardless of their finishing places in the merged category. The same will apply to the GU13 players.</p>
	9.5	<p>Players are recommended to have a minimum of 30 minutes for U13 matches and up to an hour for U15-U19 matches between scheduled match start times, or less on agreement of all parties and where practical.</p>

# REGULATIONS FOR

## SANCTIONED COMPETITIONS



### 10. Silver

Junior Sanctioned Silver competitions are 2-day or 3-day competitions which attract higher ranked English players. Players can expect to play up to 4 or 5 games across the competition depending on draw sizes.

Entry information	10.1	<ul style="list-style-type: none"> <li>On-line entry through Sport Manager</li> <li>England Squash members</li> <li>£40</li> <li>Closing date: 3 weeks pre-competition</li> <li>Acceptances based on England Squash rankings - players must be inside the top 150 for Silver 1 and 125 for Silver 2-5 in the rankings to enter the competition. Entries outside of this ranking will not be entered into the draw.</li> <li>International players must be ranked within the top 10 of their age category in their respective country. International players will not get an automatic entry into the draw- this will be decided by the seeding panel.</li> </ul>
Formats	10.2	<ul style="list-style-type: none"> <li>Best of 5 games</li> <li>All Silver competitions <b><u>must run as Full Monrad draws</u></b> with all players playing through all stages of the competition into final finishing positions as part of the Monrad.</li> <li>Draw Sizes – all 32 Monrad with the exception on BU13 BU15, BU17, BU19 which can be a maximum of a 48 Monrad</li> <li>If an odd number of entries below 25 players in a division, the final draw size will be capped at <u>the nearest even entry size</u>. The exception to this is draw sizes of 10 and 18, these will be capped at the nearest Monrad size of 8 and 16. Draw sizes of 15 will also be accepted as these guarantee all players 3 matches. Please see our Appendix for further details.</li> </ul>
	10.3	Players are recommended to have a minimum 3 hours, U13s, U15s, U17 and U19s between scheduled match start times. U9s and U11s are recommended to have a minimum of 2 hours between scheduled match start times.

### 11. Gold



# REGULATIONS FOR

## SANCTIONED COMPETITIONS



Junior Sanctioned Silver competitions are 2-day or 3-day competitions which attract higher ranked English players. Players can expect to play up to 4 or 5 games across the competition depending on draw sizes.

Entry information	11.1	<ul style="list-style-type: none"> <li>• On-line entry through Sport Manager</li> <li>• England Squash members</li> <li>• £52.50</li> <li>• Closing date: 4 weeks pre-competition</li> <li>• Acceptances based on England Squash rankings - players must be inside the top 50 in the rankings to enter the competition</li> <li>• International players must be ranked within the top 10 of their age category in their respective country.</li> </ul>
Formats	11.2	<ul style="list-style-type: none"> <li>• Best of 5 games</li> <li>• All Gold competitions <b><u>must run as Full Monrad draws</u></b>, with all players playing through all stages of the competition into final finishing positions as part of the Monrad.</li> <li>• Draw Sizes – all 32 Monrad with the exception on BU9 and GU9 which will be 16 Monrads</li> <li>• If an odd number of entries below 25 players in a division, the final draw size will be capped at <u>the nearest even entry size</u>. The exception to this is draw sizes of 10 and 18, these will be capped at the nearest Monrad size of 8 and 16. Draw sizes of 15 will also be accepted as these guarantee all players 3 matches. Please see our Appendix for further details.</li> </ul>
	11.3	For Gold competitions, players will have a minimum of 3 hours between scheduled match start times.
	11.4	International players will not get an automatic entry. Players will only be entered if they are seeded in the top 32 of all entrants.

## 12. Platinum

# REGULATIONS FOR

## SANCTIONED COMPETITIONS



Junior Sanctioned Platinum competitions are 3 to 5-day competitions and are considered as the most prestigious level of domestic junior squash tournament. Platinum competitions include the British Junior Open, British Junior Championships (BJC) and English Junior Championships (EJC). Players can expect to play up to 4 or 5 games over the course of the competition.

Entry information	12.1	<ul style="list-style-type: none"> <li>On-line entry through Sport Manager</li> <li>England Squash members</li> <li>£58 (EJC &amp; BJC)</li> <li>All entrants for the EJC must be eligible to represent England. Players who have represented other countries must have a fallow year before being eligible to play for England.</li> <li>All entrants for the BJC must be eligible to play for England, Wales, Scotland, Northern Ireland or Ireland. Players who have represented other countries must have a fallow year before being eligible to play for England.</li> </ul>
Formats	12.2	<ul style="list-style-type: none"> <li>Best of 5 games</li> <li>All Platinum competitions must run as Full Monrad draws with all players playing through all stages of the competition into final finishing positions as part of the Monrad.</li> <li>Whereby we receive an odd number of entries below 25 players in a division, the final draw size will be capped at <u>the nearest even entry size</u>. The exception to this is draw sizes of 10 and 18, these will be capped at the nearest Monrad size of 8 and 16. Draw sizes of 15 will also be accepted as these guarantee all players 3 matches. Please see our Appendix for further details.</li> </ul>
	12.3	For Platinum competitions, players will have a minimum of 3 hours between scheduled match start times.
	12.4	International players will not get an automatic entry.
	12.5	EJC format - <ul style="list-style-type: none"> <li>16 player monrad main draw. Top 12 seeded players go straight into the main draw, leaving 4 qualifying spots. The top 8 seeds will be seeded by the seeding panel.</li> <li>A maximum of 16 player qualifying draws. Qualifying draws will be based on number of entries. Players in qualifying draws will get a minimum of 2 matches.</li> <li>Only the top 50 ranked players will be eligible to enter the competition. Acceptance into the draw will be based on ES rankings.</li> </ul>

# REGULATIONS FOR SANCTIONED COMPETITIONS



		<ul style="list-style-type: none"> <li>• A maximum of 28 players will compete in each age group.</li> <li>• Players within the entry criteria that are not accepted into the qualifying draw will be placed on a waitlist.</li> </ul>
	12.6	<p>BJC Format -</p> <ul style="list-style-type: none"> <li>• Girls &amp; Boys Under 9: 32 Draws</li> <li>• Girls &amp; Boys Under 11: 32 Draw</li> <li>• Girls Under 13: 32 Draw</li> <li>• Boys Under 13: 64 Draw</li> <li>• Girls Under 15: 32 Draw</li> <li>• Boys Under 15: 64 Draw</li> <li>• Girls Under 17: 32 Draw</li> <li>• Boys Under 17: 64 Draw</li> <li>• Girls Under 19: 32 Draw</li> <li>• Boys Under 19: 32 Draw</li> </ul> <p>Welsh, Scottish and Irish entrants must be endorsed by their respective federation and be part of their own National Squads in order to enter. These players will not receive an automatic entry into the event, it will be based on seedings decided by the seeding panel</p>

# REGULATIONS FOR SANCTIONED COMPETITIONS



## 12.6 BJC Eligibility:

A player is eligible to represent England, Scotland, Wales or Ireland ('all-Ireland' via Northern Irish eligibility) in the BJC if he/she was born in the country, holds a British or British National Overseas passport, or is a citizen of, or became a naturalized citizen of, or has resided in the country for at the reduced time period of one year immediately preceding the Championship. A player who has reached the age of 18 on the final day of an event will be subject to the three-year rule stipulated in the WSF rules section K. [World Champ. Regs. – World Squash](#).

Notwithstanding the above, a player is ineligible to participate if he/she has represented another country in the year (or three years if over 18) preceding the Start Date in a recognised International Squash Team or Individual Championship (i.e. WSF World Championship, Regional Team or Individual Championship, official Match between MNFs in any age group). Note for general guidance: In the case of Individual Championships, where a player is entered by their National Federation into a World or Regional Individual Championship, a player would be deemed to have represented their nation. However, playing in a National Open event does not count towards eligibility. A player may only make one change using the reduced time period, and thereafter would be required to conform to the three-year period in respect of exercising an eligibility. In all cases of eligibility based upon residence, it is not permitted to do so based upon residence in respect of further education away from the family home, even if there is an intention to remain in the country afterwards i.e. the time period shall commence after the final day of the study period.

In all cases where a player's eligibility is in doubt, supporting evidence must be provided to England Squash at least 21 days before the competition closing date so that the player's eligibility can be reviewed, and a decision made.

# REGULATIONS FOR SANCTIONED COMPETITIONS



## 12.7 EJC Eligibility:

A player is eligible to play in the EJC he/she was born in the country (England), or is a citizen of, or became a naturalized citizen of, or has resided in the England for at the reduced time period of one year immediately preceding the Championship. A player who has reached the age of 18 on the final day of an event will be subject to the three-year rule stipulated in the WSF rules section K. [World Champ. Regs. – World Squash.](#)

Notwithstanding the above, a player is ineligible to participate if he/she has represented another country in the year (or three years if over 18) preceding the Start Date in a recognised International Squash Team or Individual Championship (i.e. WSF World Championship, Regional Team or Individual Championship, official Match between MNFs in any age group). Note for general guidance: In the case of Individual Championships, where a player is entered by their National Federation into a World or Regional Individual Championship, a player would be deemed to have represented their nation. However, playing in a National Open event does not count towards eligibility. A player may only make one change using the reduced time period, and thereafter would be required to conform to the three-year period in respect of exercising an eligibility. In all cases of eligibility based upon residence, it is not permitted to do so based upon residence in respect of further education away from the family home, even if there is an intention to remain in the country afterwards i.e. the time period shall commence after the final day of the study period.

In all cases where a player's eligibility is in doubt, supporting evidence must be provided to England Squash at least 21 days before the competition closing date so that the player's eligibility can be reviewed, and a decision made.

# REGULATIONS FOR SANCTIONED COMPETITIONS



## 12.8 Eligibility Appeals Procedures

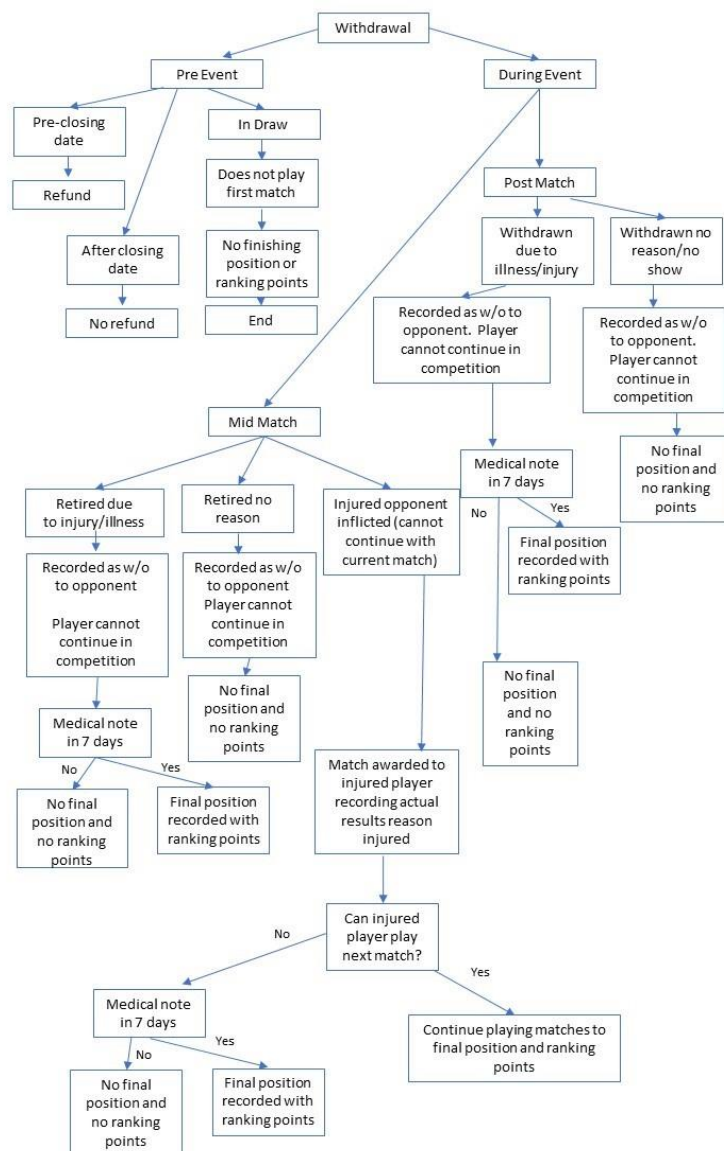
A player (or for this purpose the player's parents / carers or authorised representative) seeking review of their non-inclusion to the BJC or EJC must notify the England Squash in writing via email to [competitions@englandsquash.com](mailto:competitions@englandsquash.com) (request for review) within 2 days of the competition entry closing date. The request for review must set out in full the basis upon which the player wishes to appeal against the decision of the Competitions Team. On receipt of the request, the Competitions Team shall convene a review panel, normally comprising an England Squash Board member and 2 independent representatives. The request for review shall be sent to the Competitions Team, who has the opportunity to provide written comments to the panel Chair within 24 hours of receipt. The review panel members shall be sent the request for review, information from the Competitions Team and any other relevant supporting documentation. The review panel shall convene, either by conference call, or in person within three working days of receiving the relevant documentation.

During the review panel meeting, the player, or their representative, will be given the opportunity to articulate their request for review personally if they wish to, either in person, or by conference call to the panel. Once the review panel has reached its decision, the Competitions Manager shall notify the player concerned of the decision in writing within 24 hours. The decision of the review panel is final, against which there is no further right of appeal.

# REGULATIONS FOR SANCTIONED COMPETITIONS



## Appendix A: Sanctioned Events Withdrawal Rules/Flow



If withdrawn: players in subsequent matches get walkovers

# REGULATIONS FOR SANCTIONED COMPETITIONS



## **Appendix B: Tournament Organisers Information**

The following appendix is aimed to support Tournament Organisers with the available draw sizes at each tier of event dependent on the number of entrants on each event and the day format chosen. If an organiser wishes to run the event using a different format than specified in the guidelines below it must be put in writing to England Squash to approve. We empower our tournament organisers to run events with the ethos of trying to fit in the most matches for competitors as possible whilst fitting it into a timely schedule. Any request in keeping with this will be accepted. We accept each event has different needs and that flexibility is required within this for tournament organisers to run the best event for all the competitors.

All England Squash Sanctioned Competitions will have a Tournament Organiser/Director appointed to whom all disputes relating to Entries, Scheduling and Refereeing aspects shall be referred. All Tournament Organisers will have successfully completed an online England Squash Tournament Organiser course. We aim to empower our Tournament Organisers within the guidelines of our Sanctioned Competitions to allow them to make decisions that will ultimately improve the overall experience of their competition. From time-to-time special dispensation may be granted in areas deemed appropriate by England Squash to ensure that Tournament Organisers can run their competition in a way they see appropriate. Tournament Organisers are encouraged to contact England Squash in the competition of any issues that may arise in the organisation of their competition.

### **Roles and Responsibilities**

1. It is mandatory for all venues hosting an England Squash sanctioned event to have a valid England Squash Membership/Affiliation at the time of the event and a registered Safeguarding/Welfare lead.
2. The venue Safeguarding/Welfare lead must have a valid safeguarding qualification and valid DBS registered with England Squash.
3. It is mandatory for tournament organisers to have a valid England Squash membership, a valid DBS check, safeguarding qualification and Tournament Organisers qualification registered with England Squash before hosting and for the duration a competition.
4. A safeguarding lead must be available for the full duration of the competition and is the first point of contact to resolve any safeguarding issues.



# REGULATIONS FOR SANCTIONED COMPETITIONS



5. A qualified first aider must be present at the venue for the full duration of the competition.
6. A Tournament Organiser/Director must be appointed to whom all disputes relating to entries, scheduling and refereeing aspects shall be referred.
7. Changes to dates of a competition can only be made with permission of England Squash. All requests must be put in writing on email and communicated with England Squash clearly explaining the legitimate reason.
8. Tournament Organisers are responsible for completing and publishing draws upon receiving seedings from England Squash. As a guideline draws should be published and communicated to **ALL** entrants 7 days (Bronze and Copper), 2 weeks (Silver) or 2-3 weeks (Gold) prior to the competition.
9. Copper and Bronze Tournament Organisers will be responsible for deciding the draw format for each age category. Tournament Organisers may refer to England Squash for support. For more information on draw sizes and formats please see appendix.
10. Silver, Gold and Platinum competition draw formats will be decided by England Squash.
11. England Squash empowers tournament organisers to promote their own competitions. England Squash will act as the entry mechanism, and sanctioning body for the competitions. Responsibility to promote and encourage applications lies with the tournament organiser. It is up to the tournament organiser to engage the audience in their area that the competition will best suit. A more detailed overview of the audience of the competitions can be seen in the competition guide below. England Squash will support where possible tournament organisers in materials and advice on how to best run their competitions in keeping with our policies and guidelines.
12. Tournament Organisers are responsible for submitting the final finishing positions for their competition into Sport Manager. When the results have been confirmed, the Tournament Organiser must complete a claims form for payment of the entry fee payments minus the levy.
13. A £50 returnable competition registration fee for Copper and Bronze competitions is required to be paid prior to the competition being approved.

# REGULATIONS FOR SANCTIONED COMPETITIONS



## Competition Levy's 2024-2025

Gold	£18.50 per player
Silver	£12 per player
Bronze	£5.75 per play
Copper	£4.75 (members) or £6 (non members) per player

## Tournament Software

1. All competitions sanctioned by England Squash for the 2024-25 season will be run using Sport Manager as the tournament software. This is mandatory for all sanctioned competitions. Training and support will be provided by England Squash.
2. All competition organisers must submit their competition final finishing positions into Sport Manager within 48 hours of their tournament finishing.

## Competition Applications

England Squash will monitor the demand and applications of competitions. Allocation will be made to host as many competitions as possible on each date. Where competitions are closer than 70 miles or 90 minutes, whichever is greater between one another, initially the date will be given to the first applicant with the second or more being provided further options of dates. If none of the dates suit, a further look into the feasibility to host both competitions will be done involving both tournament organisers. We wish to facilitate as many competitions as possible on each date and therefore will aim to deliver competitions closer than 70 miles if it is perceived possible by both organisers.

# REGULATIONS FOR SANCTIONED COMPETITIONS



## Event Formats

### COPPER Events



All copper events are to be played in 1 day. A minimum of 3 matches is the guideline, however if less a best of 5 format will be used and players should be informed of this in advance of the publishing of the draw if the entry is low. The maximum number of matches in a day is 3 best of 5 matches or 5 best of 3 matches.

Number of Entrants	Draw Format	Number of Matches per player	Best of 3 or Best of 5 Games
2	Straight Final – Consult players on other possibilities and categories to get a full event	1	Best of 5
3	Round Robin	2	Best of 5
4	Round Robin	3	Best of 5 or best of 3
5	Round Robin	4	Best of 3
6	Two Round Robin Boxes of 3, with play off for position	3	Best of 5
7	Two Round Robin Boxes of 3 or 4 with play off for position	3/4	Best of 3
8	Two Round Robin Boxes of 4 or 8 Monrad draw	4 or 3	Best of 3 or best of 5
9	Three boxes of 3 with playoff for position or Two Round Robin Boxes or 4 or 5 with play off for position	3 or 4/5	Best of 5 or best of 5 for 2 boxes
10	Two Round Robin Boxes of 5 with play off for position	5	Best of 3
11	8 Monrad draw with byes and the three-outside top 8 play a round robin for position, or 3 round robin boxes of 4 or 3 with winners playing off for position	3 or 4/5	Best of 5 or Best of 3

# REGULATIONS FOR SANCTIONED COMPETITIONS



12	Four Round Robin Boxes of 3 with play offs for position, or Monrad draw with 4 byes	4 or 3	Best of 3
13	16 Monrad draw with 2 byes	3/4	Best of 3
14	16 Monrad draw with 2 byes	3/4	Best of 3
15	16 Monrad draw with 1 bye	3/4	Best of 3
16	16 Monrad draw or Round Robin 4 groups of 4 with winners playing off.	4 or 3/4/5	Best of 3
17-18	Round Robin 4 groups of 4 or 5 with winners playing off.	3/4/5	Best of 3
19	32 Monrad draw with byes, 3 first round losers play off in round robin	3/5	Best of 3
20-32	32 Monrad draw with byes	3/4/5	Best of 3
32	32 Monrad draw	5	Best of 3

# REGULATIONS FOR SANCTIONED COMPETITIONS



## Bronze Events



Bronze events can be done in a 1 or 2 day format at the Tournament Organisers application request. A minimum of 3 matches is the guideline, however if less a best of 5 format will be used and players should be informed of this in advance if the entry is low before publication of the draw. The maximum number of matches in a day is 3 best of 5 matches or 5 best of 3 matches to be played in one day.

## One Day Bronze Events

Number of Entrants	Draw Format	Number of Matches per player	Best of 3 or Best of 5 Games
2	Straight Final – Consult players on other possibilities and categories to get a full event	1	Best of 5
3	Round Robin	2	Best of 5
4	Round Robin	3	Best of 5 or best of 3
5	Round Robin	4	Best of 3
6	Two Round Robin Boxes of 3, with play off for position	3	Best of 5
7	Two Round Robin Boxes of 3 or 4 with play off for position	3/4	Best of 3
8	Two Round Robin Boxes of 4 or 8 Monrad draw	4 or 3	Best of 3 or best of 5
9	Three boxes of 3 with playoff for position or Two Round Robin Boxes or 4 or 5 with play off for position	3 or 4/5	Best of 5 for 3 boxes or best of 3 for 2 boxes
10	Two Round Robin Boxes of 5 with play off for position	5	Best of 3
11	8 Monrad draw with byes and the three-outside top 8 play a round robin for position, or 3 round robin boxes of 4 or 3 with winners playing off for position	3 or 4/5	Best of 5 or Best of 3

# REGULATIONS FOR SANCTIONED COMPETITIONS



12	Four Round Robin Boxes of 3 with play offs for position, or Monrad draw with 4 byes	4 or 3	Best of 3
13	16 Monrad draw with 2 byes	3/4	Best of 3
14	16 Monrad draw with 2 byes	3/4	Best of 3
15	16 Monrad draw with 1 bye	3/4	Best of 3
16	16 Monrad draw or Round Robin 4 groups of 4 with winners playing off.	4 or 3/4/5	Best of 3
17-18	Round Robin 4 groups of 4 or 5 with winners playing off.	3/4/5	Best of 3
19	32 Monrad draw with byes, 3 first round losers play off in round robin	3/5	Best of 3
20-32	32 Monrad draw with byes	3/4/5	Best of 3
32	32 Monrad draw	5	Best of 3

## Two Day Bronze Events

Number of Entrants	Draw Format	Number of Matches per player	Best of 3 or Best of 5 Games
2	Straight Final – Consult players on other possibilities and categories to get a full event	1	Best of 5
3	Round Robin	2	Best of 5
4	Round Robin	3	Best of 5
5	Round Robin	4	Best of 5
6	Two Round Robin Boxes of 3, with play off for position	4	Best of 5
7	Two Round Robin Boxes or 3 or 4 with play off for position	3/4	Best of 5
8	Two Round Robin Boxes of 4 or 8 Monrad draw	4 or 3	Best of 5
9	Three boxes of 3 with playoff for position or Two Round Robin Boxes or 4 or 5 with play off for position	3 or 4/5	Best of 5
10	Two Round Robin Boxes of 5 with play off for position	5	Best of 5
11	16 Monrad draw with byes and the three-outside top 8 play a round robin for position, or 3 round robin boxes of 4 or 3 with winners playing off for position	3 or 4/5	Best of 5

# REGULATIONS FOR SANCTIONED COMPETITIONS



12	Four Round Robin Boxes of 3 with play offs for position, or Monrad draw with 4 byes	4 or 3	Best of 5
13	16 Monrad draw with 2 byes	3/4	Best of 5
14	16 Monrad draw with 2 byes	3/4	Best of 5
15	16 Monrad draw with 1 bye	3/4	Best of 5
16	16 Monrad draw or Round Robin 4 groups of 4 with winners playing off.	4 or 3/4/5	Best of 5
17-18	Round Robin 4 groups of 4 or 5 with winners playing off.	3/4/5	Best of 5
19	32 Monrad draw with byes, 3 first round losers play off in round robin	3/5	Best of 5
20-32	32 Monrad draw with byes	3/4/5	Best of 5
32	32 Monrad draw	5	Best of 5

# REGULATIONS FOR SANCTIONED COMPETITIONS



## Silver Events



Silver Events can be run on a 2 or 3-day format at the Tournament Organisers application request. A minimum of 4 matches is the guideline, however if less a player should be informed of this in advance if the entry is low before publication of the draw. The maximum number of matches in a day is 3 for U13 and U11 and 2 a day for U15, U17 and U19. Full Monrad draws must be used where possible to ensure the best competition for competitors. Where draw formats other than this are suggested with round robins, excessive byes, or less than the advertised number of games above, England Squash should be consulted, and players fully notified of the nature of the draw. Due to the number of entries sometimes it isn't possible to get a perfect clean draw and it is key competitors are fully aware of the draw format on draw publication.

Number of Entrants	Draw Format	Number of Matches per player	Best of 3 or Best of 5 Games
2	Straight Final – Consult players on other possibilities and categories to get a full event	1	Best of 5
3	Round Robin	2	Best of 5
4	Round Robin	3	Best of 5
5	Round Robin	4	Best of 5
6	Two Round Robin Boxes of 3, with play off for position	4	Best of 5
7	Two Round Robin Boxes or 3 or 4 with play off for position	3/4	Best of 5
8	8 monrad draw	3	Best of 5
9	Three boxes of 3 with playoff for position	3	Best of 5
10	Two boxes of 5 with playoff for position	5	Best of 5
11	16 monrad draw with byes and the three-outside top 8 play a round robin for position	4/3	Best of 5
12	16 monrad draw with 4 byes	4/3	Best of 5
13	16 monrad draw with 3 byes	3/4	Best of 5
14	16 monrad draw with 2 byes	3/4	Best of 5
15	16 monrad draw with 1 bye	3/4	Best of 5
16	16 monrad draw	4	Best of 5



# REGULATIONS FOR SANCTIONED COMPETITIONS



17/18	16 monrad draw with 1/2 reserves	4	Best of 5
19	2 day event – 16 A Draw, and 3 reserve list	3/4/5	Best of 5
20	4 qualify matches 4 winners into 16 monrad. 4 losers into round robin for position 17-20	3/5	Best of 5
21-23	4 qualify matches 4 winners into 16 monrad. 1-3 reserves. 4 losers into round robin for position 17-20	3/4/5	Best of 5
24	32 Monrad with 8 byes	4/5	Best of 5
25-27	32 Monrad with 8 byes, 1-3 reserves	4/5	Best of 5
28	32 Monrad with 4 byes	4/5	Best of 5
29-31	32 Monrad with 4 byes, 1-3 reserves	4/5	Best of 5
32	3 day event - 32 monrad draw	4/5	Best of 5
32+	3 day event - 32 monrad draw with reserves applying the same principle as 16-31.	4/5	Best of 5

# REGULATIONS FOR SANCTIONED COMPETITIONS



## Gold Events



Gold Events can be run on a 3-day or 4-day format at the Tournament Organisers application request. 4-day formats are mainly if the event chooses to apply qualification rounds prior to the event, this will be clearly notified on entry, any further use of a 4 day format will be at the discretion of England Squash and will be clearly notified prior to the event. A minimum of 4 matches is the guideline, however if less a player should be informed of this in advance if the entry is low before publication of the draw. The maximum number of matches in a day is 3 for U13 and U11 and 2 a day for U15, U17 and U19. Full Monrad draws must be used where possible to comply with the demands of our computer software and to ensure the best competition for competitors. Where draw formats other than this are suggested with round robins, excessive byes, or less than the advertised number of games above, England Squash should be consulted, and players fully notified of the nature of the draw. Due to the number of entries sometimes it isn't possible to get a perfect clean draw and it is key competitors are fully aware of the draw format on draw publication.

Number of Entrants	Draw Format	Number of Matches per player	Best of 3 or Best of 5 Games
2	Straight Final – Consult players on other possibilities and categories to get a full event	1	Best of 5
3	Round Robin	2	Best of 5
4	Round Robin	3	Best of 5
5	Round Robin	4	Best of 5
6	Two Round Robin Boxes of 3, with play off for position	4	Best of 5
7	Two Round Robin Boxes or 3 or 4 with play off for position	3/4	Best of 5
8	8 monrad draw	3	Best of 5
9	Three boxes of 3 with playoff for position	3	Best of 5
10	Two boxes of 5 with playoff for position	5	Best of 5
11	16 monrad draw with byes and the three-outside top 8 play a round robin for position	4/3	Best of 5
12	16 monrad draw with 4 byes	4/3	Best of 5

# REGULATIONS FOR SANCTIONED COMPETITIONS



13	16 monrad draw with 3 byes	3/4	Best of 5
14	16 monrad draw with 2 byes	3/4	Best of 5
15	16 monrad draw with 1 bye	3/4	Best of 5
16	16 monrad draw	4	Best of 5
17/18	16 monrad draw with 1/2 reserves	4	Best of 5
19	2 day event – 16 A Draw, and 3 reserve list	3/4/5	Best of 5
20	4 qualify matches 4 winners into 16 monrad. 4 losers into round robin for position 17-20	3/5	Best of 5
21-23	4 qualify matches 4 winners into 16 monrad. 1-3 reserves. 4 losers into round robin for position 17-20	3/4/5	Best of 5
24	32 Monrad with 8 byes	4/5	Best of 5
25-27	32 Monrad with 8 byes, 1-3 reserves	4/5	Best of 5
28	32 Monrad with 4 byes	4/5	Best of 5
29-31	32 Monrad with 4 byes, 1-3 reserves	4/5	Best of 5
32	3 day event - 32 monrad draw	4/5	Best of 5

# REGULATIONS FOR SANCTIONED COMPETITIONS



## Platinum Events



Platinum events are national events can be run over 3 to 5 day format and organised by England Squash. The maximum number of matches in a day is 3 for U13 and U11 and 2 a day for U15, U17 and U19. Full Monrad draws must be used where possible to comply with the demands of our computer software and to ensure the best competition for competitors. Where draw formats other than this are suggested with round robins, excessive byes, or less than the advertised number of games above, England Squash should be consulted, and players fully notified of the nature of the draw. Due to the number of entries sometimes it isn't possible to get a perfect clean draw and it is key competitors are fully aware of the draw format on draw publication.

Number of Entrants	Draw Format	Number of Matches per player	Best of 3 or Best of 5 Games
2	Straight Final – Consult players on other possibilities and categories to get a full event	1	Best of 5
3	Round Robin	2	Best of 5
4	Round Robin	3	Best of 5
5	Round Robin	4	Best of 5
6	Two Round Robin Boxes of 3, with play off for position	4	Best of 5
7	Two Round Robin Boxes or 3 or 4 with play off for position	3/4	Best of 5
8	8 monrad draw	3	Best of 5
9	Three boxes of 3 with playoff for position	3	Best of 5
10	Two boxes of 5 with playoff for position	5	Best of 5
11	16 monrad draw with byes and the three-outside top 8 play a round robin for position	4/3	Best of 5
12	16 monrad draw with 4 byes	4/3	Best of 5
13	16 monrad draw with 3 byes	3/4	Best of 5
14	16 monrad draw with 2 byes	3/4	Best of 5
15	16 monrad draw with 1 bye	3/4	Best of 5
16	16 monrad draw	4	Best of 5

# REGULATIONS FOR SANCTIONED COMPETITIONS



17/18	16 monrad draw with 1/2 reserves	4	Best of 5
19	2 day event – 16 A Draw, and 3 reserve list	3/4/5	Best of 5
20	4 qualify matches 4 winners into 16 monrad. 4 losers into round robin for position 17-20	3/5	Best of 5
21-23	4 qualify matches 4 winners into 16 monrad. 1-3 reserves. 4 losers into round robin for position 17-20	3/4/5	Best of 5
24	32 Monrad with 8 byes	4/5	Best of 5
25-27	32 Monrad with 8 byes, 1-3 reserves	4/5	Best of 5
28	32 Monrad with 4 byes	4/5	Best of 5
29-31	32 Monrad with 4 byes, 1-3 reserves	4/5	Best of 5
32	3-4 day event - 32 monrad draw	4/5	Best of 5
32+	3-4 day event - 32 monrad draw with reserves applying the same principle as 16-31.	4/5	Best of 5