

# REGULATIONS FOR SANCTIONED COMPETITIONS



## Contents

	Regulation updates July 2025	2
1	General	3-4
2	Safeguarding including photography and video recording policy	5
3	Competition Entries	6-7
4	Withdrawals and Refunds	8-10
5	Disputes	11
6	Seeding	12-14
7	Ranking	15-16
8.1	BJC Eligibility	17
8.2	EJC Eligibility	18
8.3	Eligibility Dispute Process	19
	Appendix A: Sanctioned Events Withdrawal Rules/Flow	20

# REGULATIONS FOR SANCTIONED COMPETITIONS



<b>Regulation updates September 2024</b>		
	6.9	The seedings will be issued within 4 days of the closing date for review. No email queries will be accepted.
<b>Regulation updates July 2025</b>		
	7.5	A players ranking is calculated by using: <ul style="list-style-type: none"><li>• An average of a player's best 5 results (or 4 results for Under 19s).</li><li>• Results in the last 12 months (n.b - at the start of the season this will include results from the previous season)</li></ul>

# REGULATIONS FOR SANCTIONED COMPETITIONS



The rules and regulations governing junior sanctioned competitions are established and maintained by England Squash. England Squash reserves the right to amend these rules at any time, without prior notice, to uphold the integrity of the competition and to ensure the welfare of all participants.

All Sanctioned Competitions must meet the following criteria.

## 1. General

Venues	1.1	All matches must be played on courts affiliated to England Squash and organised by an affiliated club.
Rules	1.2	Matches shall be played under the Rules of the Game unless approved or directed by England Squash. Rules can be found at: <a href="http://www.worldsquash.org">www.worldsquash.org</a>
Code of Conduct	1.3	All players, coaches, parents, tournament organisers and attendee must follow the England Squash Code of Conduct for Players. For more information and printable versions of each document, please <a href="#">click here</a>
Eyewear	1.4	<a href="#">WSF certified</a> or British Standard BS7930.1 protective eyewear is mandatory for participation in all sanctioned England Squash competitions. Eyewear must be always worn by all junior players while on court. This includes appropriate prescriptive protective eyewear or iMask in front of spectacles.
Clothing	1.5	All players must wear clothing suitable for squash including non-marking soles. Please refer to the specific venue policy for further information.  Players competing in matches at Platinum, Gold and Silver competitions, or where steaming is taking place must not wear the same-coloured top as their opponent. All players are required to bring a minimum of two different coloured tops to all matches they are scheduled to play in. In the competition that two players are wearing the same-coloured top for a match, the lower seeded player must change into their second top to prevent any clashes.
Balls	1.6	A Dunlop double dot competition ball must be used at all competition levels from Bronze to Platinum, for ages U11-U19.  A Dunlop single dot ball should be used for all Boys and Girls U9 competitions. At Copper level it's at the discretion of the Tournament Organiser, a Dunlop blue, red, single or double dot ball can be used.
Player Referee marking	1.7	All junior players are required to undertake refereeing duties during junior competitions. Both participants from a completed match are expected to jointly referee the following match and must be ready and present immediately after the conclusion of their own match.  By entering a competition, players agree to comply with this requirement. Any requests for exemption must be submitted in writing to

# REGULATIONS FOR SANCTIONED COMPETITIONS



		<p><a href="mailto:competitions@englandsquash.com">competitions@englandsquash.com</a> and to the tournament organiser prior to the competition.</p> <p>Failure to fulfil refereeing responsibilities, including abandoning duties, will result in the player being marked as a default. No ranking points will be awarded for that competition, and this will be reflected in their official ranking.</p>
Scoring	1.8	<p>All events and age categories will be played point a rally (PAR) scoring to 11. Should players reach 10-10 in any game a tie break will operate, the winner needing 2 clear points to win.</p> <p>Should a round robin format be played, and the number of matches is equal between any players, the winner will be decided on games won. Should the number of games be equal then it is then decided on points difference.</p>

# REGULATIONS FOR SANCTIONED COMPETITIONS



## 2. Safeguarding including photography and video recording policy

2.1	The England Squash safeguarding policy including details on photography and video recording is available by <a href="#">clicking here</a> .
2.2	Tournament Organisers will be able to use Sport Manager to access data such as your name and email address to contact you in relation to any tournaments entered. Tournament Organisers will bound by <a href="#">Data Processing Conditions</a> which means they can only access and use data in relation to any tournaments entered.
2.3	<ul style="list-style-type: none"> <li>• By entering an England Squash sanctioned competition, you consent for you/your child to be filmed, and publicity connected with, the competition, including on court video recording, media interviews, photographs, TV footage and live streaming of matches. Unless the Tournament Organisers is informed in writing before the commencement of the competition.</li> <li>• In accordance with our Child Protection Policy, we will not permit photographs, video, or other images of children/young people to be taken without the consent of the parent or guardian.</li> <li>• These photographs or videos will be used by England Squash, their partners, and the press and will be used for promotional purposes and used in an appropriate manner.</li> <li>• The images and videos may be reproduced in magazine articles, websites, leaflets, posters, social media, or any other appropriate publication that promotes and publicises the game of squash and squash 57, and the work of England Squash.</li> <li>• England Squash will take all possible steps to ensure these images and videos are used solely for the purposes they are intended. If you become aware that these images are being used inappropriately, please inform England Squash immediately.</li> <li>• England Squash owns all rights, copyright title and ownership of these photographs and videos in perpetuity.</li> </ul>
2.4	If, as a parent/carer, you wish to record or take an image that includes a person other than you or your child, you must gain consent from the person or their parent or carer. If consent is not given, do not take the image or recording. Non-consensual filming or recording should be reported to the event organiser. There may be confidential safeguarding reasons why consent is not given and this should be respected without question.

# REGULATIONS FOR SANCTIONED COMPETITIONS



## 3. Competition Entries

	3.1	Entrants must be an England Squash member on the last day of the competition, except for Copper events.
	3.2	All entrants must have an England Squash account with a linked Sport Manager account, with Copper competitions being the exception.
	3.3	All entries must be made through the tournament software Sport Manager and payment must be at time of entry.
Age groups	3.4	Entrants must be under the maximum age as of the last day of the competition to be eligible to compete in their respective age category.
	3.5	Age categories are as follows: Boys and Girls U9s, U11s, U13s, U15s, U17s and U19s.
	3.6	<p>Players may only enter 1 age category per competition in Platinum, Gold and Silver competitions.</p> <p>For Bronze and Copper competitions players can enter 2 age categories providing those age groups are on separate days and receive 2 sets of ranking points.</p> <p>If age categories are merged, players may only receive ranking points for 1 age category.</p> <p>Where categories are merged the rankings, allocation will work in the following way; Players will receive their ranking points at the category in which they entered.</p>
	3.7	Whilst every effort will be made to check all entries, it is ultimately the responsibility of the participant to ensure that their entry complies with the entry policies. This includes correct England Squash membership details (date of birth and gender) and entry into the correct age category and/or competition. It is at the discretion of England Squash as to whether entries made in error will be accepted.
	3.8	By entering a competition, entrants are agreeing to abide by all terms and conditions of entry. Failure to comply with the guidance may result in your entry being withdrawn or ranking points being withheld.
	3.9	<p>Due to the high demand for positions in Silver, Gold, and Platinum competitions, draw sizes will be <b>capped</b>. Any additional entries outside of the draw size will be placed on a waitlist pending withdrawals.</p> <p><i>*See sections 10,11 &amp; 12 for further details on draw sizes. *</i></p>
	3.10	<u>England Squash will not be held liable for any expenses incurred by those placed on waitlists.</u> We advise that all players when making bookings for tournaments should use services with a full comprehensive refund policy.
	3.11	The waitlist will be issued with the seeding for each draw. Once on the waitlist and seedings are issued players are not permitted to move to another age

# REGULATIONS FOR SANCTIONED COMPETITIONS



		category, if applicable. Players may only move age categories if advised in advance of the seedings and waitlists being issued.
	3.12	<p>The waitlist will be issued in the order of player ranking.</p> <p>If a player does not have a ranking the order of the waitlist will be based on the earliest entry.</p>
	3.13	<p>Late entries - If there is space in the draw the player may enter at the discretion of the organising committee*, providing they would be seeded in the lowest seeding bracket and would not detrimentally impact the draw.</p> <p>This only applies prior to the draw being released, once the draw is released no late entries will be accepted.</p> <p>*Tournament Organiser, England Squash, Seeding Panel.</p> <p>Explanatory note: A Player accepted as a late entrant who subsequently moves into a seeded position will be included in the draw.</p>

# REGULATIONS FOR SANCTIONED COMPETITIONS



## 4. Withdrawals and Refunds

	4.1	Withdrawals pre closing date must be made via the Sport Manager account. No refunds will be given to withdrawals after the closing date. See the England Squash <a href="#">help guides</a> for full details and instructions.
	4.2	<p>Withdrawals from any competition after the official closing date—including from plate events—must be communicated to the Tournament Organiser or England Squash as soon as possible, either prior to the competition or on the day of the event. A valid reason must be provided.</p> <p>No refunds will be issued for withdrawals made after the closing date. Refunds will only be granted under the following circumstances:</p> <ul style="list-style-type: none"> <li>• The player does not make it into the draw.</li> <li>• A competition grade is cancelled.</li> </ul> <p>All other refund requests will be considered at the discretion of the Tournament Organiser or England Squash.</p>
	4.3	<p>In the event of a withdrawal during a competition due to illness or injury, no ranking points will be awarded unless the following form is completed within 7 days of the competition ending: <a href="https://englandsquash.typeform.com/to/ynxUUr1C">https://englandsquash.typeform.com/to/ynxUUr1C</a>.</p> <p>The form must include the reason for withdrawal and, where appropriate, be accompanied by a medical certificate. It is the responsibility of the player and their parent/guardian to ensure this is submitted</p> <p><b><u>Failure to provide sufficient notice or a letter of explanation accompanied with a medical certificate within 7 days post competition will result in a default being awarded against your position with no ranking points allocated.</u></b></p> <p><b><u>Appendix A provides rules and flow.</u></b></p>
	4.4	In case of a dispute over the validity of the reason of withdrawal the tournament organiser must notify England Squash within 7 days. England Squash will then have the authority to validate the rationale and have the final decision on the points allocation.
	4.4	No player shall enter two or more competitions if the published dates of the competitions overlap. Any player deemed to have entered two or more competitions for the purpose of withdrawing from one after the closing date will not receive a refund of their entry fee.
	4.5	Upon entering a competition, participants are expected to play in all scheduled games to which they are involved and must be prepared to play at the times

# REGULATIONS FOR SANCTIONED COMPETITIONS



		stated for each competition. No games shall be conceded before or during the competition unless agreed to by the tournament organiser and/or England Squash.
	4.6	<p>If a player is late for a match for a reason out of their control (i.e. traffic jam), the player/parent should contact the Tournament Organiser in the first instance with an estimated time of arrival. If the time of arrival is less than 15 minutes after the scheduled time every effort should be made to play the match. If the time of arrival is more than 15 minutes after the scheduled time, the opponent will be handed a walkover and the player concerned will be permitted to play in the next round.</p> <p>If a player is a “no show” or cannot give a valid reason for a late arrival, then the opponent will be handed a walkover and the player concerned will not be permitted to play in any further rounds.</p>
	4.7	<p>All players are expected to be ready to play their match at the scheduled time regardless of whether the court is running behind schedule. If a player is not present at the scheduled time, this will be considered late arrival.</p> <p>Tournament Organisers reserve the right to adjust match times and court assignments to maintain the event schedule.</p>
	4.8	England Squash and/or the tournament organiser will not be liable for any expenses incurred because of a competition being cancelled or postponed. All expenses are at the sole risk of the entrant. We advise all entrants to search for accommodation and travel with a comprehensive refund policy.
	4.9	Appendix A in this document provides withdrawal rules and flow.
	4.10	For all junior competitions, a player may withdraw without penalty, pertaining to section 4.11 below, before 12:00pm on the Monday prior to the start of the tournament. Any withdrawal after this deadline and before the start of a player’s first match is considered a late withdrawal. Any player who is registered for a competition and does not show up to play is also considered a late withdrawal. All withdrawals and any refunds are subject to the conditions in section 4: Withdrawals.
	4.11	<p>Penalties for late withdrawals are as follows:</p> <ul style="list-style-type: none"> <li>- 1st late withdrawal within a 12-month period: No penalty, but the late withdrawal will be noted on the player’s record.</li> <li>- 2nd withdrawal within a 12-month period: The player receives a rankings penalty. The penalty is a zero-point tournament being added to the player’s record. The zero-point tournament counts as a tournament exposure and will be treated like any other tournament with regards to rankings.</li> </ul>

# REGULATIONS FOR SANCTIONED COMPETITIONS



		<ul style="list-style-type: none"><li>- 3rd or further withdrawal within a 12-month period: For any additional late withdrawal within the 12-months, the player will continue to receive a late withdrawal rankings penalty for each tournament in question.</li></ul>
	4.12	Any disputes relating to late withdrawals must be directed to England Squash <a href="mailto:competitions@englandsquash.com">competitions@englandsquash.com</a>

# REGULATIONS FOR SANCTIONED COMPETITIONS



## 5. Disputes

5.1	<p>All requests for decisions relating to the rules, or any other issues arising from a competition, must be submitted in writing (via letter or email) to England Squash. Such requests must be made by the participating player, their parent or guardian, or the Tournament Organiser, and must be received within <b>seven (7) days</b> of the tournament's conclusion.</p> <p>England Squash reserves the right to request any supporting documentation or additional information deemed relevant to the matter in question.</p> <p>While the seven-day window is standard, England Squash may, at its sole discretion, choose to consider requests submitted after this period.</p>
5.2	<p>England Squash shall have the final authority over all disputes arising under these rules and regulations. It reserves the right to impose penalties as deemed appropriate, which may include, but are not limited to, the adjustment or removal of ranking points, the issuance of fines, and the imposition of temporary or permanent bans on individuals.</p> <p>England Squash may delegate its authority to a Disputes Committee, which shall act on its behalf in such matters. The Disputes Committee must comprise a minimum of three (3) members, and must include at least one (1) member of a different gender to the others, to ensure balanced representation.</p>
5.3	<p>An appeal may be submitted against any decision made by the Disputes Sub-Committee. All appeals must be made in writing (via letter or email) and received by England Squash within <b>fourteen (14) days</b> of the date of the original decision. Appeals submitted after this deadline may not be considered.</p> <p>All instances of player or parent misconduct must be reported using the official <b>Disciplinary Report Form</b>. This form can be obtained by contacting England Squash at <a href="mailto:competitions@englandsquash.com">competitions@englandsquash.com</a>.</p>
5.4	<p>All incidents of player or parent misconduct must be reported using the official <b>Disciplinary Report Form</b>. This form is available upon request by emailing <a href="mailto:competitions@englandsquash.com">competitions@englandsquash.com</a>.</p> <p>England Squash expects all tournament organisers to adhere strictly to this disciplinary policy. Full co-operation is essential to ensure the effective implementation of the disciplinary procedures.</p> <p>England Squash will strictly enforce penalty measures for players where misconduct is identified, in accordance with the established rules and regulations.</p>

# REGULATIONS FOR SANCTIONED COMPETITIONS



## 6. Seeding

	6.1	The rankings for the month in which entry closes will be used to determine the seedings for the competition. i.e. if the closing date is 25 <sup>th</sup> May then the current May rankings will be used.
	6.2	<b>Squash levels will not be used for seeding.</b>
Seeding brackets	6.3	<p>When draws are created the 1 &amp; 2 seeded players are placed at the top and bottom of the draw, the rest of the draw placed as follows:</p> <ul style="list-style-type: none"> <li>• 3-4 seeds are drawn and placed randomly</li> <li>• 5-8 seeds are drawn and placed randomly</li> <li>• 9-16 seeds are drawn and placed randomly</li> <li>• 17-32 seeds are drawn and placed randomly</li> <li>• 33-64 seeds are drawn and placed randomly</li> </ul> <p>Randomly = randomly selected by the tournament software.</p> <p>Once the draws are issued no further changes will be made to the seedings, except if there is a withdrawal. Seeds will be changed as follows:</p> <ul style="list-style-type: none"> <li>• If no.1 seed withdraws: no.2 seed becomes 1 seed; top 3-4 seed moves up to 2 seed; top 5-8 seed moves up to 3-4 seed; top 9-16 seed from rankings moves up to 5-8 seed; top 17-32 seed from rankings moves up to 9-16 seed. Bye goes to top seed</li> <li>• No.2 seed withdraws: top 3-4 seed moves up to 2 seed; top 5-8 seed moves up to 3-4 seed; top 9-16 seed from rankings moves up to 5-8 seed; top 17-32 seed from rankings moves up to 9-16 seed. Highest seed gets the bye</li> <li>• 3-4 seed withdraws: top 5-8 seed moves up to 3-4 seed; top 9-16 seed from rankings moves up to 5-8 seed; top 17-32 seed from rankings moves up to 9-16 seed. Highest seed gets the bye</li> <li>• 5-8 seed withdraws: top 9-16 seed from rankings moves up to 5-8 seed; top 17-32 seed from rankings moves up to 9-16 seed. Highest seed gets the bye</li> <li>• 9-16 seed withdraws: top 17-32 seed from rankings moves up to 9-16 seed. Highest seed gets the bye</li> </ul> <p><i>*For Platinum, Gold and Silver competitions, no changes will be made to the draw after 5pm the day before the competition starts.</i></p>
<b>Bronze and Copper</b>		
	6.4	All Seeding for Bronze and Copper competitions should be managed by the tournament organiser using the England Squash Ranking system. Tournament organisers may request the input from England Squash.

# REGULATIONS FOR SANCTIONED COMPETITIONS



	6.5	The England Squash Ranking system should be the primary method of seeding. In exceptional circumstances a player may be moved to a top 8 position if suitable justification can be offered.
	6.6	All seeding related questions must be directed towards the tournament organiser.
<b>Silver</b>		
	6.7	All Seeding for Silver competitions will be organised by England Squash using the England Squash Ranking system.
<b>Gold and Platinum</b>		
	6.7	For Gold and Platinum competitions a seeding panel will manually seed the top 8 seeds per age group. This will be based on ranking, finishing positions in recent major events, recent results and head to heads. The remainder of the seedings will revert to the latest ES ranking at the time of entry closing.
	6.7a	The seeding panel may use player results in the lower age group to help with seeding, if the player is playing up an age group. This rule only applies to the top 8.
	6.8	The seeding panel will be chaired by a Performance Coach, supported by other nominated coach(es) of suitable expertise and knowledge. This nominated coach(es) may change from event to event.
	6.9	The seedings will be issued within 4 days of the closing date for review. No email queries will be accepted.
<b>International Entries</b>		
	6.10	International players will be seeded manually based on information from NGBs and other competition ranking information. International players should also provide a note on their entry and email <a href="mailto:juniorcompetitions@englandsquash.com">juniorcompetitions@englandsquash.com</a> with any relevant information. For Platinum, Gold & Silver events, finishing positions, recent results and head to heads from Platinum, Gold & Silver events in the last 12 months will be taken into account. For Bronze & Copper competitions finishing positions, recent results and head to heads in the last 12 months will be taken into consideration.
	6.11	Injury: <ul style="list-style-type: none"> <li>• Players that are injured for a period of over 3 months are eligible to submit a seeding request</li> <li>• This must be submitted prior to entry closing date by email to: <a href="mailto:juniorcompetitions@englandsquash.com">juniorcompetitions@englandsquash.com</a>.</li> <li>• This must be complemented with medical information for the panel to consider. This must include details on the type of injury, medical advice on the time away from competition and return to competition, and</li> </ul>

# REGULATIONS FOR SANCTIONED COMPETITIONS



		<p>previous significant results in Silver, Gold or Platinum events in the 6 months prior to injury,</p> <ul style="list-style-type: none"> <li>• Seeding will be based on previous rankings and results in the 6 months prior to injury in comparison to the other players within each event,</li> <li>• The seeding panel will determine the number of events this will be valid for based on the amount of time away from competition.</li> <li>• The seeding panel may review the seeding position event by event on return to competition based on the form demonstrated in coming back into competition.</li> </ul>
	6.12	<p><b>Exceptional Circumstance</b></p> <ul style="list-style-type: none"> <li>• England Squash reserves the right to seed players differently to ranking in the case of exceptional circumstances. Whether a player is eligible for this will be decided by the seeding panel.</li> <li>• England Squash reserves the right to make final decisions in all matters involving exceptional circumstances.</li> </ul>

# REGULATIONS FOR SANCTIONED COMPETITIONS



## 7. Ranking

Aging up	7.1	All players will receive 50% of ranking points in the upper age group 2 months before their month of birth. i.e. if the birthday is in November, a player will get 50% of their points on 1st September rankings.
	7.2	<p>If there are fewer than four girls entered in any given age group, participants will have the following options:</p> <ul style="list-style-type: none"> <li>• Play in a group of 2 or 3</li> <li>• Play up in the next higher girls' age group</li> <li>• Join the corresponding boys' age group</li> <li>• Receive a full refund.</li> </ul> <p>If a girl chooses to compete in the boys' category, she will receive ranking points for her original girls' age group. If she chooses to compete in the higher girls' age group, she may choose whether her ranking points apply to her original or the higher age group.</p> <p>If a girls' category is not held due to insufficient entries and a girl competes in either a higher girls' age group or the corresponding boys' group, she will earn ranking points based on her performance relative to other girls from her original age group.</p> <p>For example: if she finishes 4th overall in the boys' category but is the highest-placed girl from her age group, she will receive 1st place ranking points for her original girls' category.</p> <p>Alternatively, if she chooses to earn ranking points in the higher girls' category, they will be based on her overall finishing position within that group.</p> <p>Note: To be eligible for ranking points, all matches in the competition must be completed.</p>
	7.3	<p>At both Bronze and Copper sanctioned competitions, requests may be made for girls to play in a boy's category, irrespective of whether there is a girl's category they can enter, as these are deemed participation level competitions.</p> <p>Any requests must be sent directly to England Squash by email to <a href="mailto:competitions@englandsquash.com">competitions@englandsquash.com</a> and must be supported by justifiable reasoning. All requests will be considered by England Squash.</p> <p>Girls will not receive ranking points should they choose to play in the boy's event if there is a suitable Girls event available in the competition.</p> <p>Boys are not permitted to play in girls' categories.</p>

# REGULATIONS FOR SANCTIONED COMPETITIONS



	7.4	Updated rankings points list for 2025-2026 - <a href="https://www.englandsquash.com/competitions/junior/rankings">https://www.englandsquash.com/competitions/junior/rankings</a>
	7.5	A players ranking is calculated by using: <ul style="list-style-type: none"><li>• An average of a player's best 5 results (or 4 results for Under 19s).</li><li>• Results in the last 12 months (n.b - at the start of the season this will include results from the previous season)</li></ul>

# REGULATIONS FOR SANCTIONED COMPETITIONS



## 8.1 BJC Eligibility:

A player can represent **England, Scotland, Wales, or Ireland** (including Northern Ireland) in the BJC if they meet **any** of these conditions:

- They were born in that country
- They hold a **British** or **British National Overseas** passport
- They are a citizen or naturalized citizen of that country
- They have lived in that country for **at least one year** before the Championship starts

If a player is **18 or older on the final day** of the event, they must follow the **three-year eligibility rule** from the WSF rules (World Squash Federation).

However, a player **cannot take part** if they have represented **another country** in the past **year** (or **three years if over 18**) in an official international squash event. These include:

- WSF World Championships
- Regional team or individual events
- Official matches between national federations

**Note:** Playing in a **National Open** doesn't count as representing a country.

A player can use the **one-year residency rule only once**. After that, they must follow the **three-year rule** for future eligibility changes.

**Important:** Time spent living in another country for **education** (like university) **does not count** toward the residency requirement. The one-year period starts **after** studies are complete and the player has finished living away from their family home.

If there's **any doubt** about a player's eligibility, they must send **supporting documents to England Squash at least 21 days before** the competition closing date for review.

If a player (or their parent, carer, or representative) wants to challenge their **non-selection** for the **BJC**, they must:

- **Email** a written **request for review** to: [competitions@englandsquash.com](mailto:competitions@englandsquash.com)
- This must be done **within 2 days** of the competition's **entry deadline**.

The email must clearly explain **why** the player is appealing the decision made by the Competitions Team.

## 8.2 EJC Eligibility:

A player can play in the **EJC (England Junior Championship)** if:

# REGULATIONS FOR SANCTIONED COMPETITIONS



- They were **born in England**,
- Are a **citizen** or **naturalized citizen** of England, or
- Have lived in England for **at least one year** before the Championship starts.

If a player is **18 or older** on the **final day** of the event, they must follow the **three-year eligibility rule** (as stated in the WSF World Championship Regulations, Section K).

However, a player **cannot take part** if they have represented **another country** in the past:

- **One year**, if they are under 18, or
- **Three years**, if they are 18 or older

This includes playing in official international squash competitions like:

- WSF World Championships
- Regional team or individual events
- Matches between national squash federations

**Note:** Playing in a **National Open** does **not** count as representing a country.

A player can only use the **one-year residency rule once**. If they switch countries again, they must follow the **three-year rule**.

Also, **residency for university or further education** does **not count**. The one-year period must begin **after** studies end and the player returns from living away from home.

If there's **any uncertainty** about a player's eligibility, they must send **proof to England Squash** at least **21 days before the competition's entry deadline**, so it can be reviewed.

## 8.3 Eligibility Dispute Process

If a player (or their parent, carer, or representative) wants to challenge their **non-selection** for the **BJC** or **EJC**, they must:

- **Email** a written **request for review** to: [competitions@englandsquash.com](mailto:competitions@englandsquash.com)
- This must be done **within 2 days** of the competition's **entry deadline**.

# REGULATIONS FOR SANCTIONED COMPETITIONS



The email must clearly explain **why** the player is appealing the decision made by the Competitions Team.

## **What happens next:**

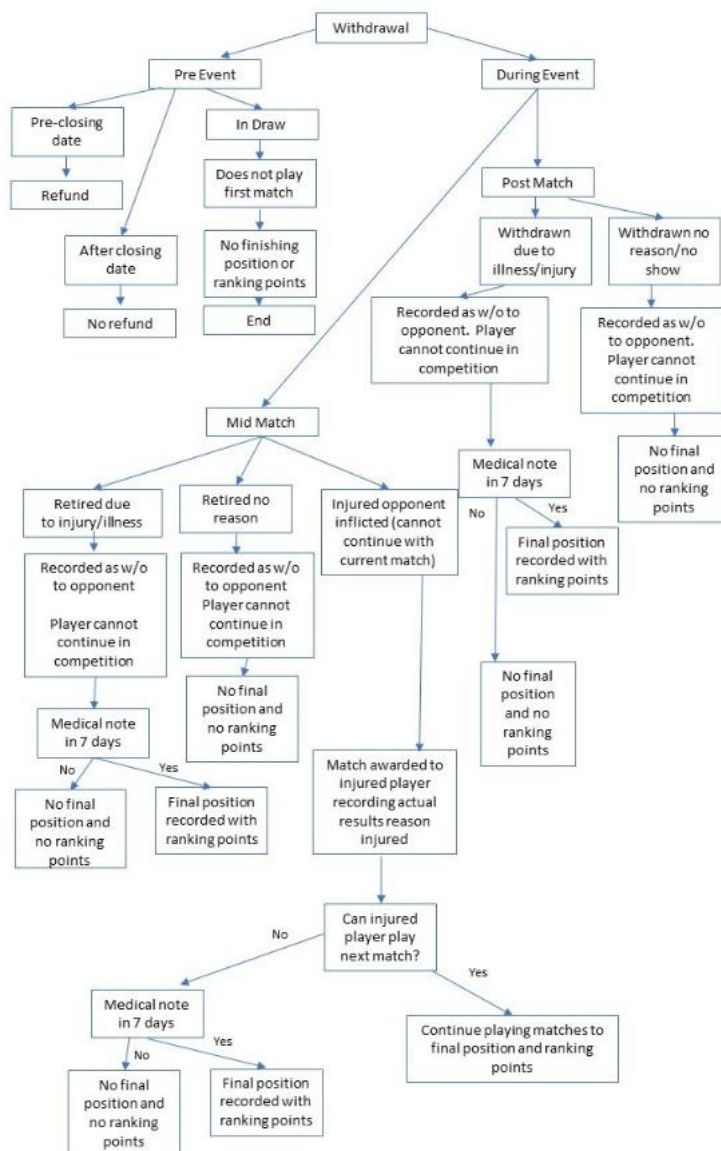
1. **England Squash** will set up a **review panel**, usually made up of:
  - a. 1 England Squash Board member, and
  - b. 2 independent people.
2. The Competitions Team can respond in writing to the panel within **24 hours** of receiving the appeal.
3. The panel will receive:
  - a. The player's request for review
  - b. The Competitions Team's response
  - c. Any other supporting documents
4. The panel will meet (either in person or via call) within **3 working days** of getting all documents.
5. During the meeting, the player (or their representative) can speak to the panel directly, either:
  - a. In person, or
  - b. By phone/video call.
6. Once a decision is made, the **Competitions Manager** will notify the player in writing within **24 hours**.

**Important:** The panel's decision is **final**. There is **no further right to appeal**.

# REGULATIONS FOR SANCTIONED COMPETITIONS



## Appendix A: Sanctioned Events Withdrawal Rules/Flow



If withdrawn: players in subsequent matches get walkovers